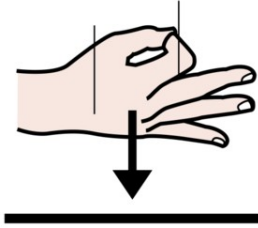


MULAN





MULAN



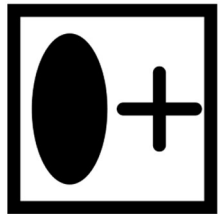
est

1



fille

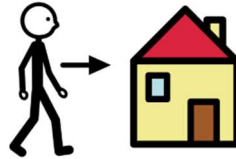
.



Des



SOLDATS



ARRIVENT.

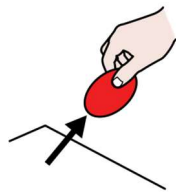
1



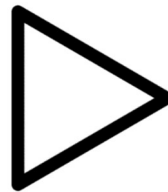
nuit,



MULAN



prend



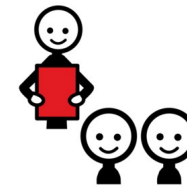
l'



ÉPÉE



DE



son



PAPA

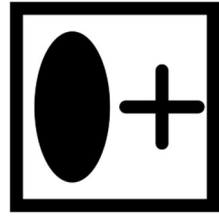
.



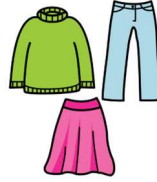
MULAN



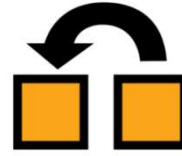
enfile



des



HABITS



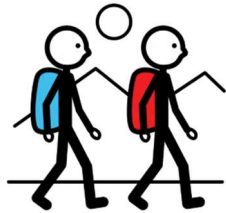
D'



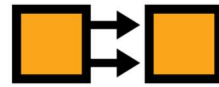
HOMME



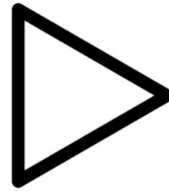
MULAN



PART



POUR



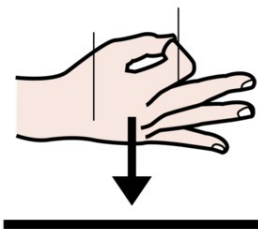
L'



ARMÉE



Muschu



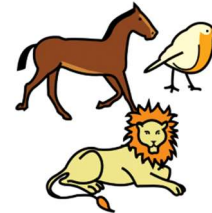
est

1

un



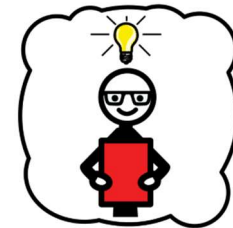
PETIT



ANIMAL



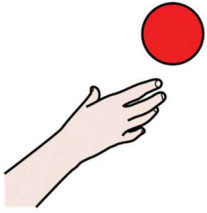
TRÈS



FUTÉ



Muschu



veut



aider



MULAN

.



MULAN



ADOPTÉ

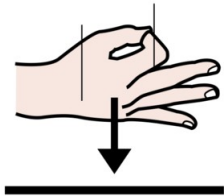


Muschu

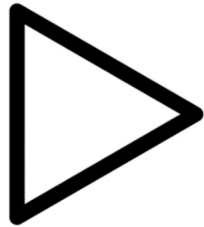
.



Shang



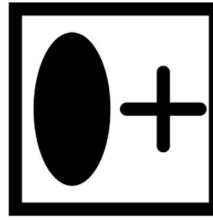
est



LE



chef

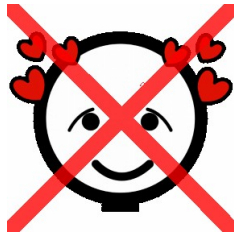


des



SOLDATS

.



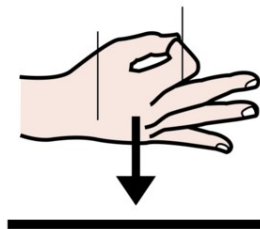
.

Shang n'aime pas MULAN

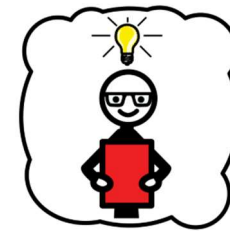


.

MULAN s'entraîne



1



.

MULAN

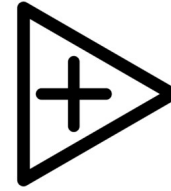
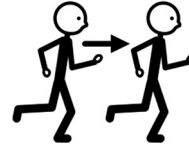
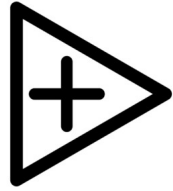
est

un

SOLDAT

TRÈS

DOUÉ



MULAN

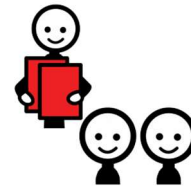
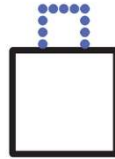
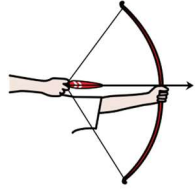
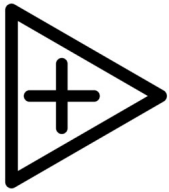
et

les

SOLDATS poursuivent

les

ennemis



Les

SOLDATS TIRENT

SUR

MULAN

et

ses

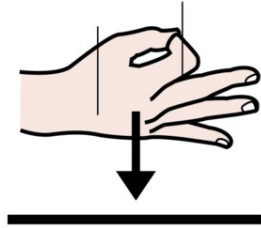
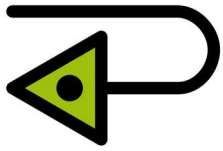
AMIS



MULAN

sauve

Shang



.

Mais

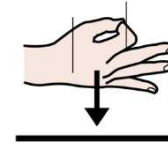
MULAN

est

blessée



que



1



.

Les

SOLDATS comprennent

MULAN

est

une

fille



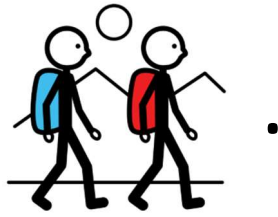
à



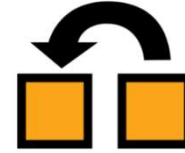
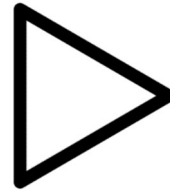
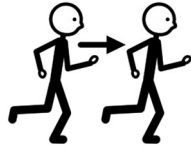
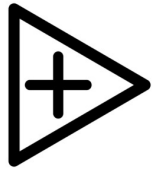
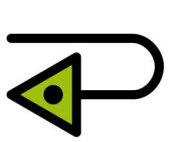
.

Shang PARDONNE

MULAN



MULAN PART



Mais

les

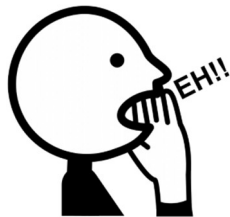
ennemis SUIVENT

L'

ARMÉE

DE

Shang

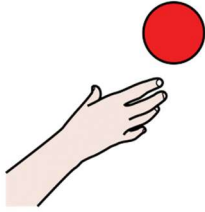


MULAN prévient Shang

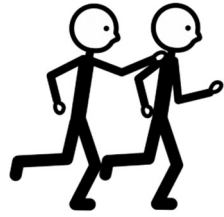




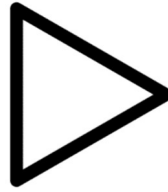
Shan-Yu



veut



attraper



L'



empereur

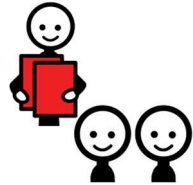
.



MULAN



et



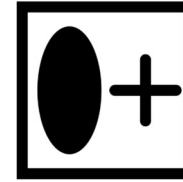
ses



AMIS



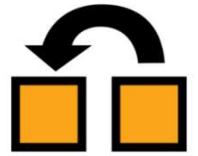
enfilent



des



HABITS



DE



fille

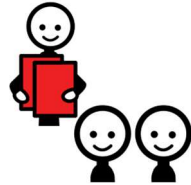
.



MULAN



et



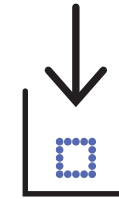
ses



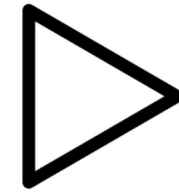
AMIS



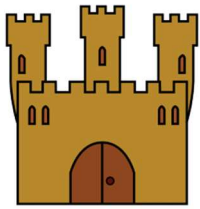
entrent



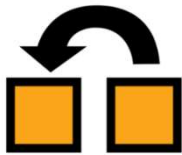
dans



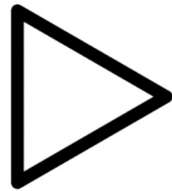
LE



château



DE

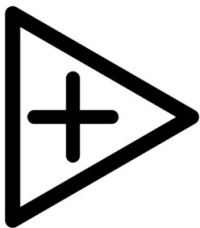


L'



empereur

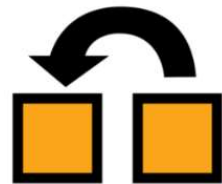
.



Les



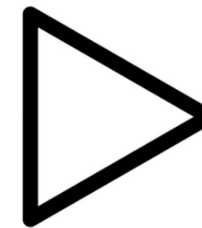
AMIS



DE



MULAN ATTRAPE

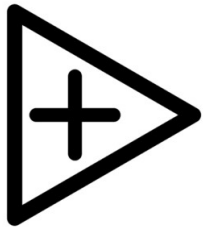


L'



empereur

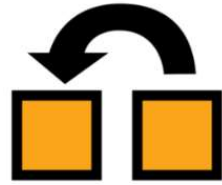
.



Les



AMIS



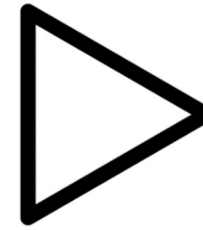
DE



MULAN



et



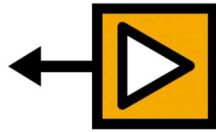
L'



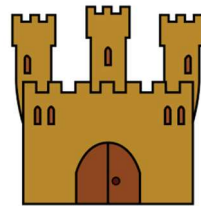
empereur



SORTENT



DU



château

.



Shan-Yu



et



Shang



SE BATTENT

.



Muschu

et

MULAN

aider

Shang

.



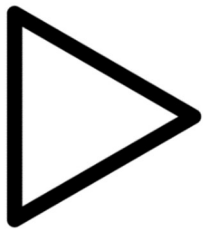
Muschu, Shang

et

MULAN

gagnent

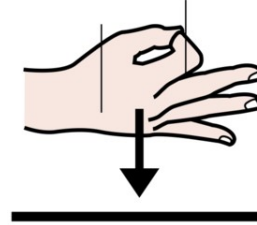
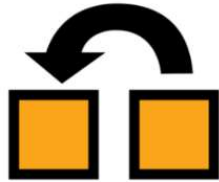
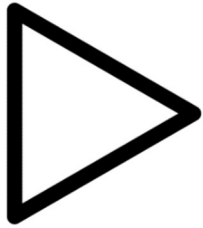
.



.

L'

empereur remercie MULAN



.

LE

PAPA

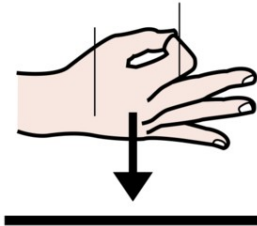
DE

MULAN

est

TRÈS

fier



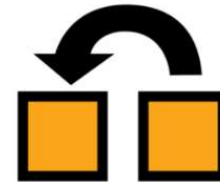
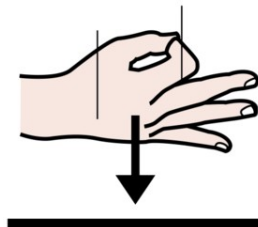
.

Shang

est

TRÈS

content



.

Shang

est

AMOUREUX

DE

MULAN