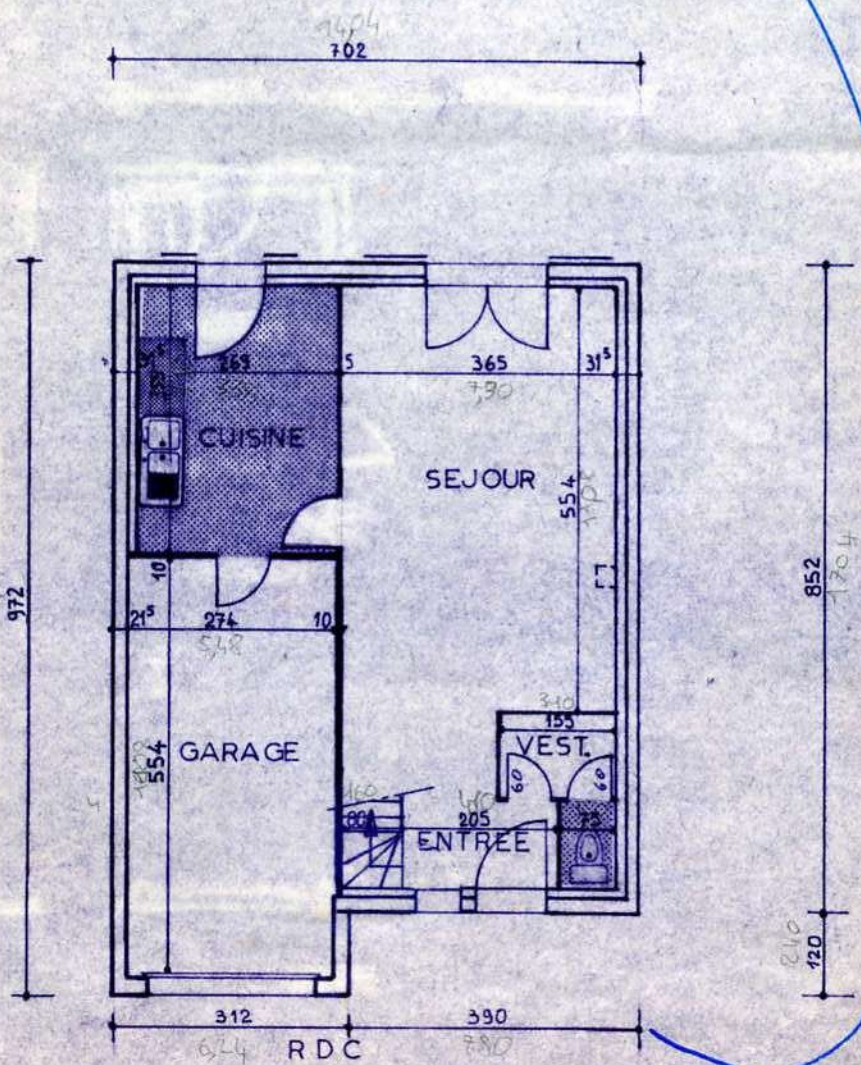
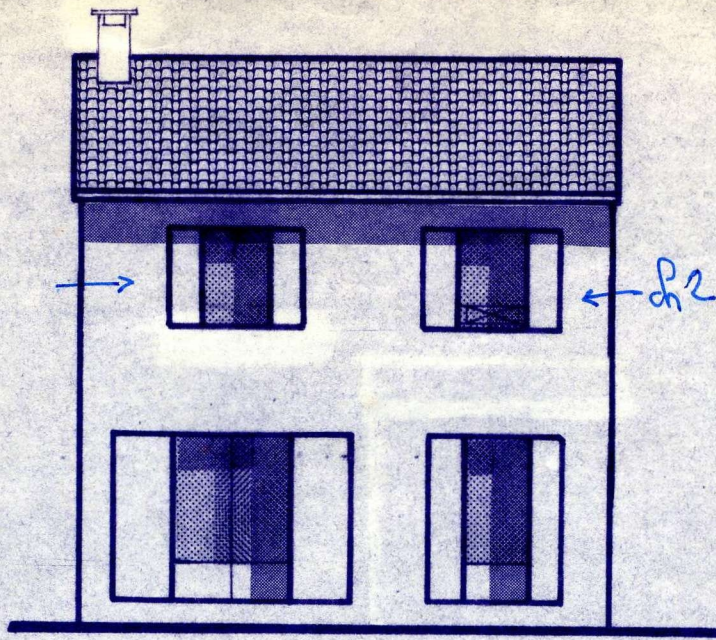
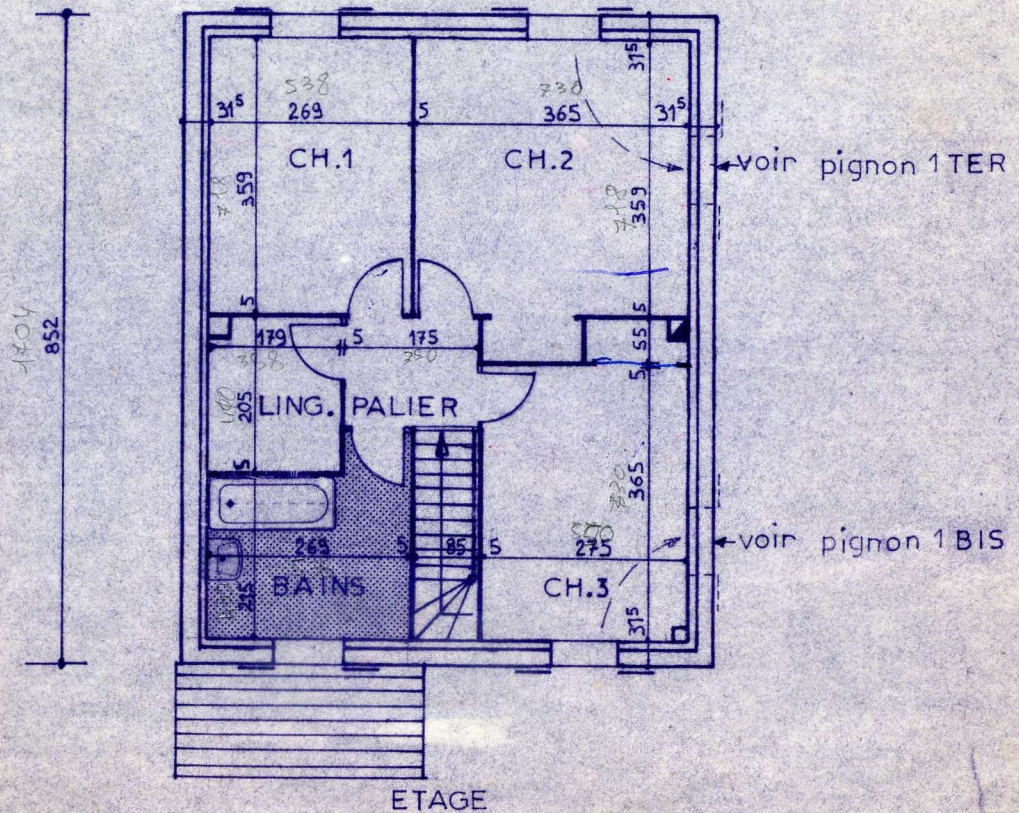
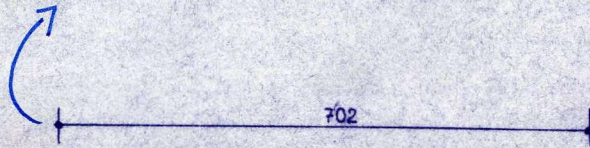


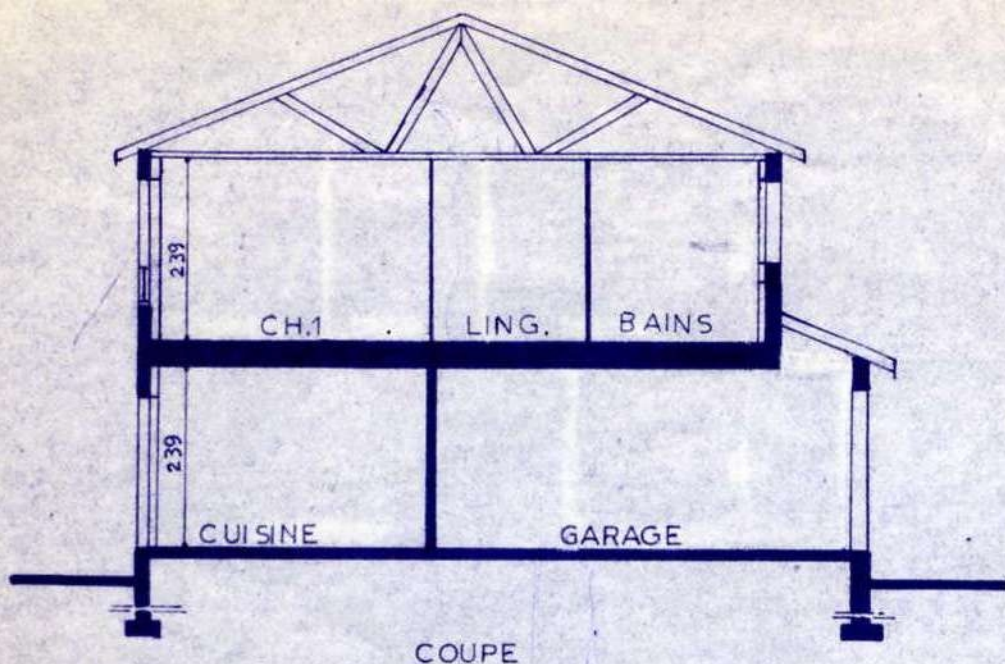
FACADE AVANT





FACADE ARRIERE





COUPE

SEJOUR	22,24	m2
CUISINE	9,55	m2
ENTREE	2,36	m2
WC	0,86	m2
VESTIAIRE	1,70	m2
CHAMBRE 1	9,66	m2
CHAMBRE 2	13,10	m2
CHAMBRE 3	10,02	m2
BAINS	6,29	m2
LINGERIE	3,63	m2
PALIER	2,54	m2
PLACARDS	1,41	m2
SURFACE HABITABLE :		83,36 m2
SURFACE GARAGE :		15,12 m2
SURFACE TOTALE :		98,48 m2
- SURFACES -		