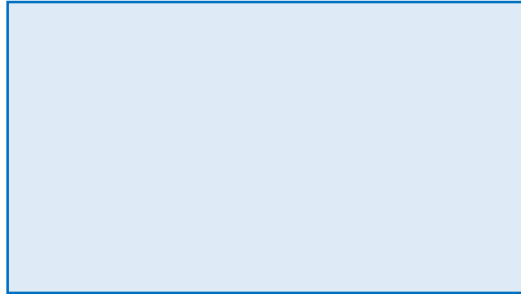
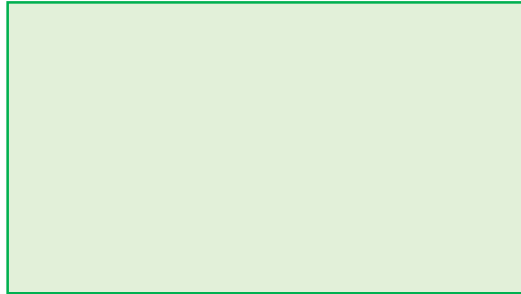
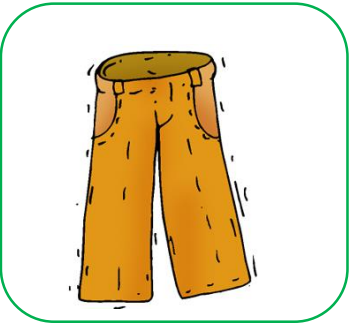


bour



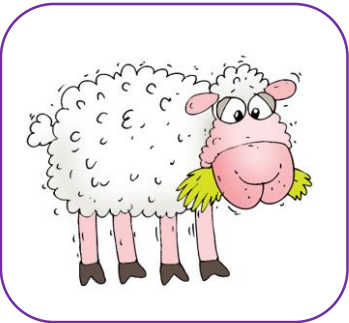
ri

re

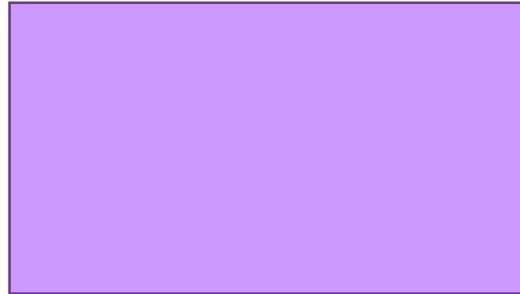


ta

lon

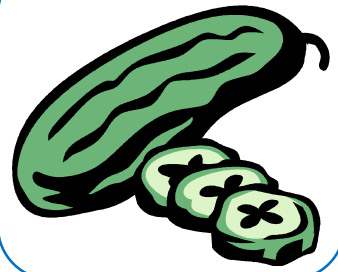


mou



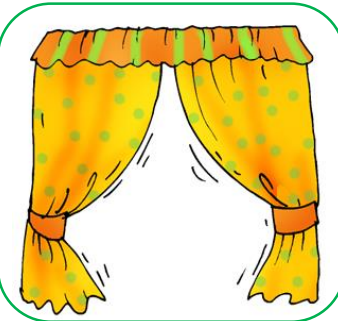


sa



con

bre



ri



é

le

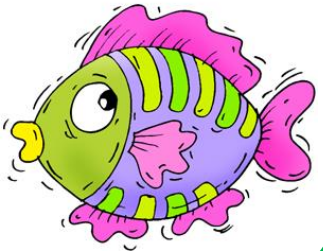


ma



co

be



sson



as

tro

te



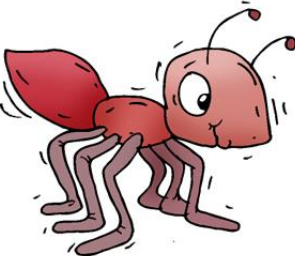
te



ca

mé

lé

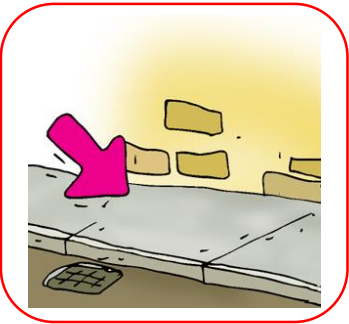


mi

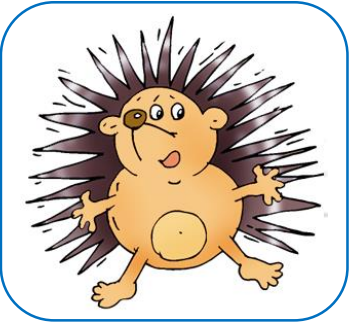


tru

che

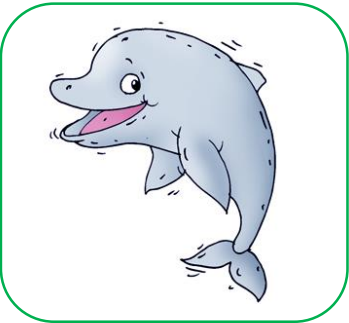


tro



hé

ri



phin



é

gle



bre



to

bo



che



bi

be



da

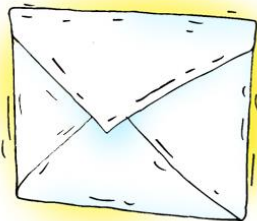


dra



cha

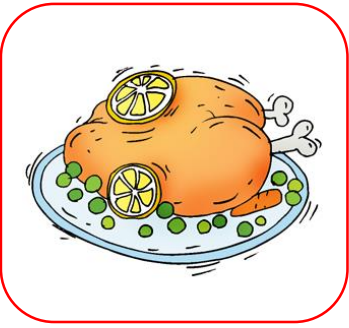
pi



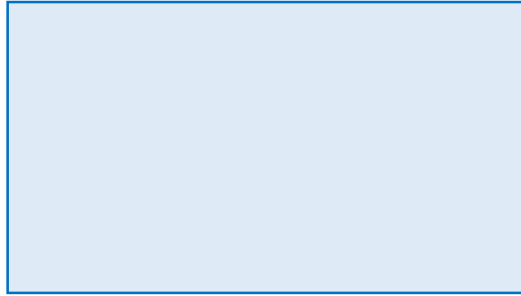
ve

lo

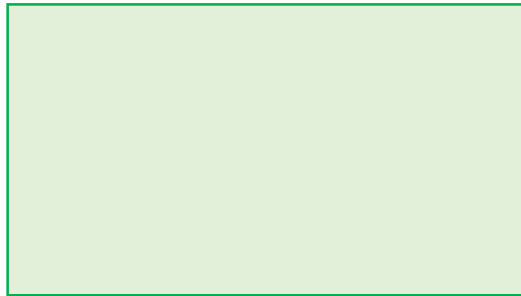
ppe



let

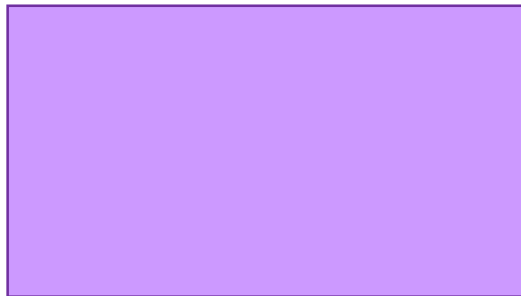


tre



tu

re



ro

nne

tam

sou

pan

ton

pin

com

deau

toi

rin

lom

poi

nau

ten

on

four

au

tim

ggan

dou

ron

pan

gon

teau

en

pou

mon

voi

cou

ttoir

sson

dau

pin