

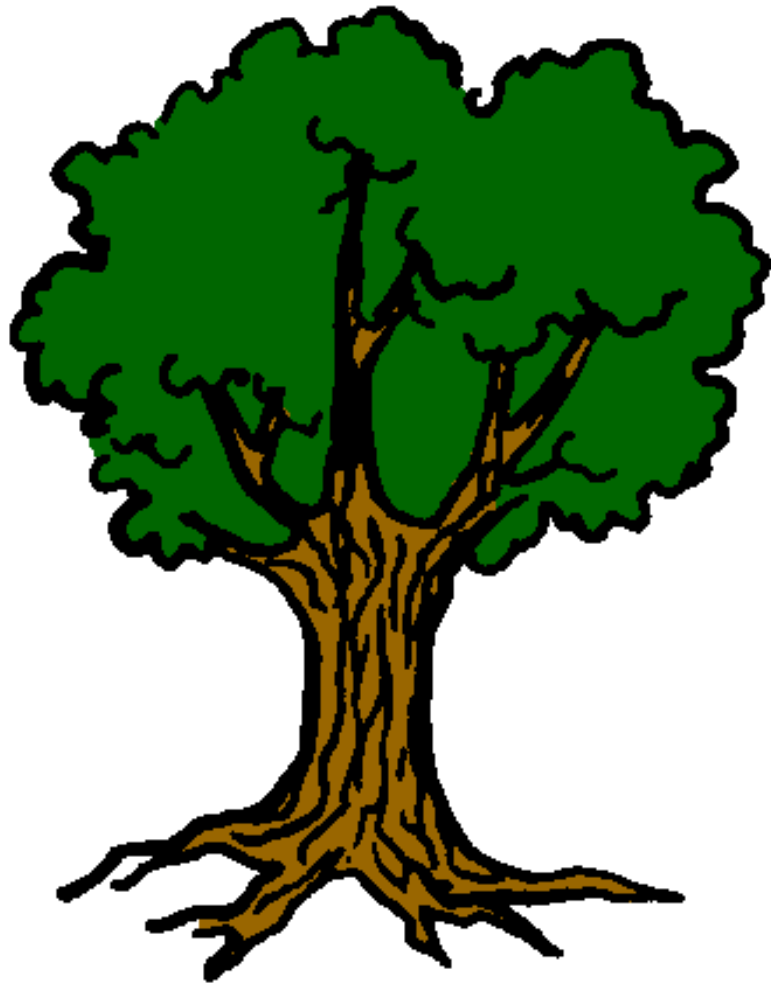


A

a a

a

A



arbre

arbre



é

É

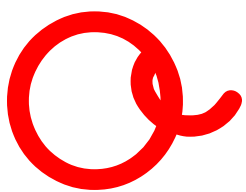
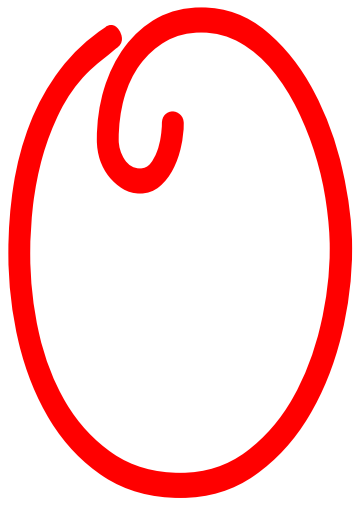
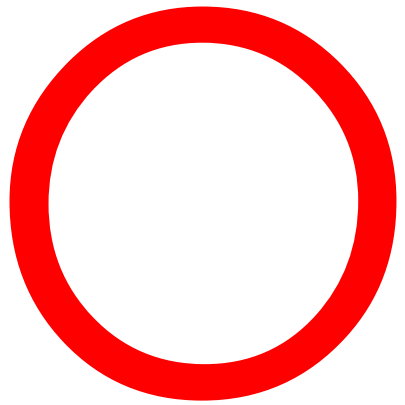
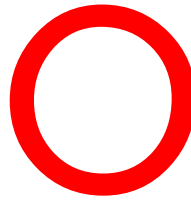
é

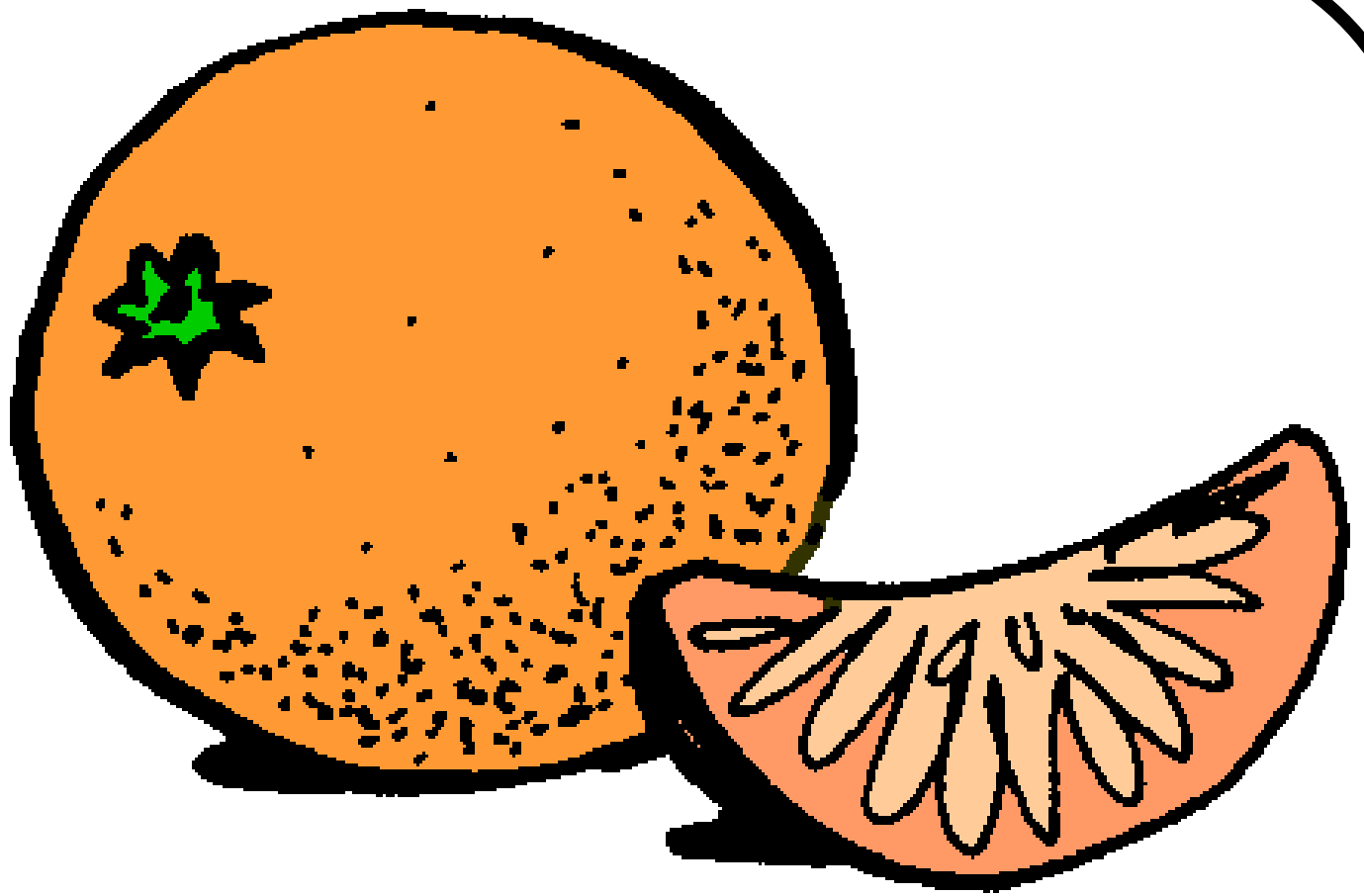
É



b é b é

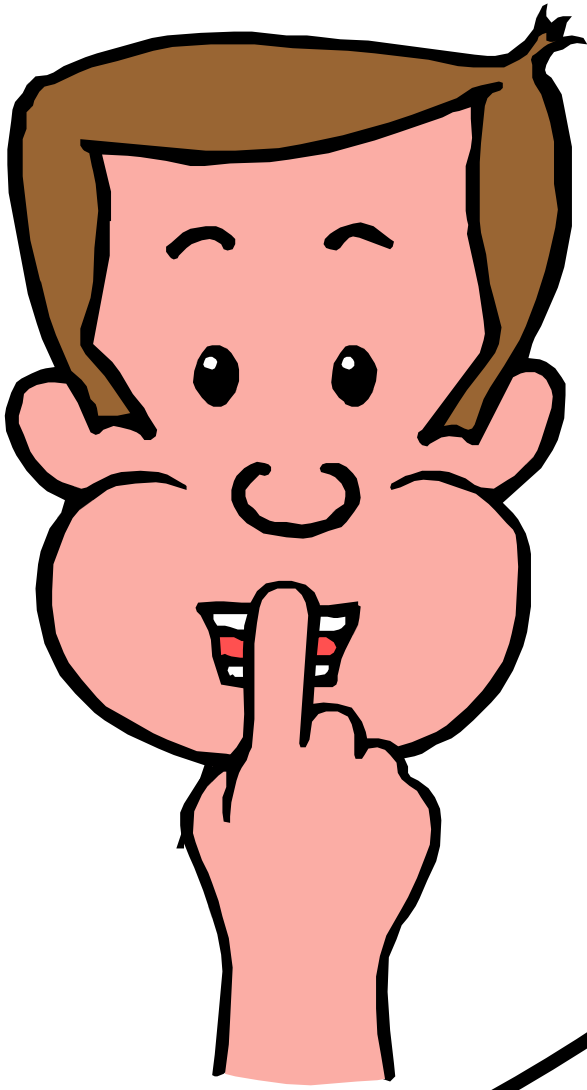
bébé





orange

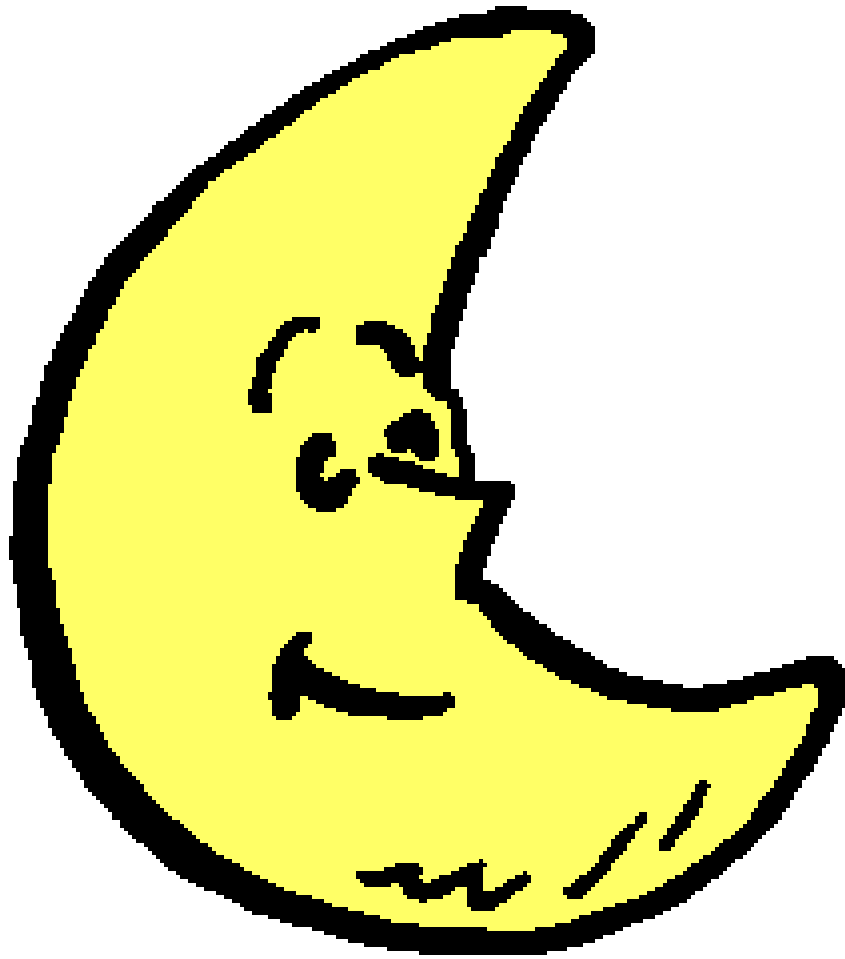
orange



I L

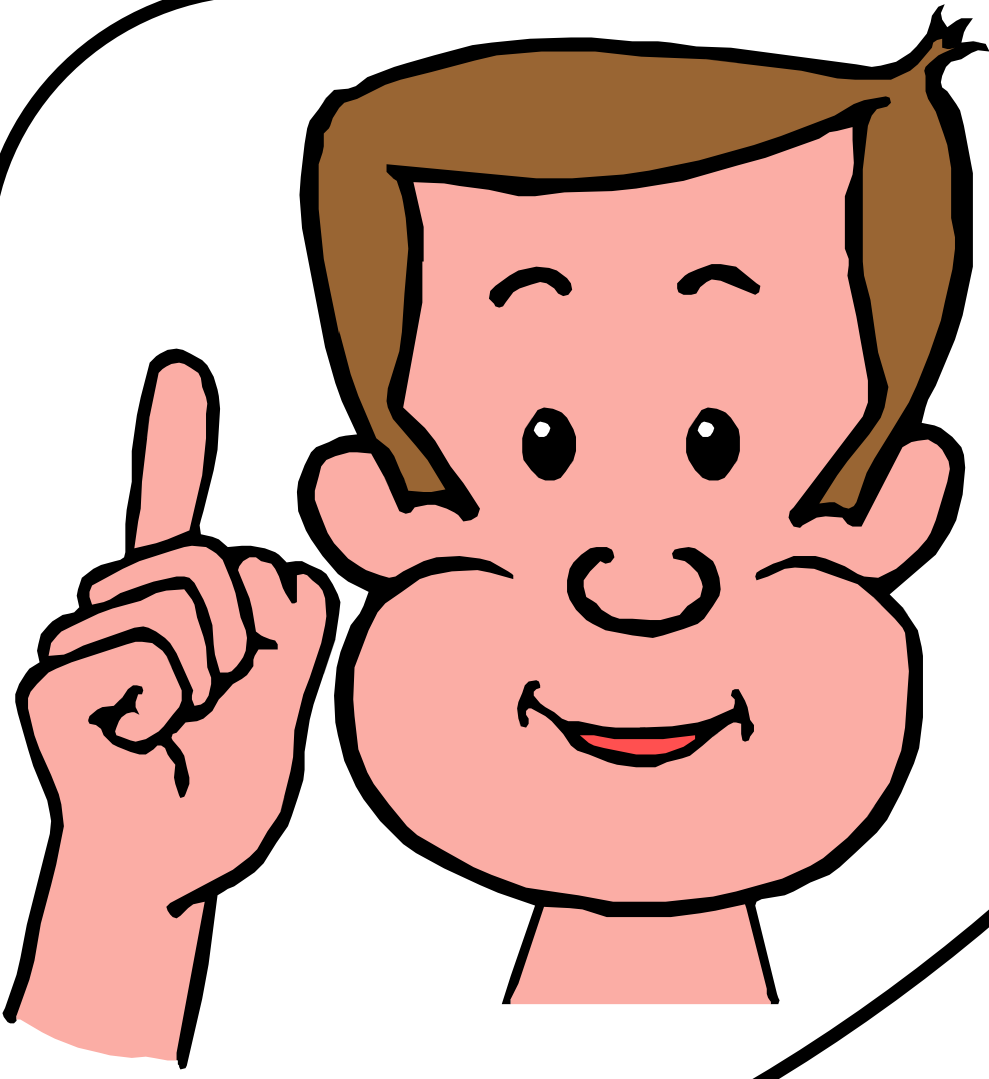
l

l



lune

lune

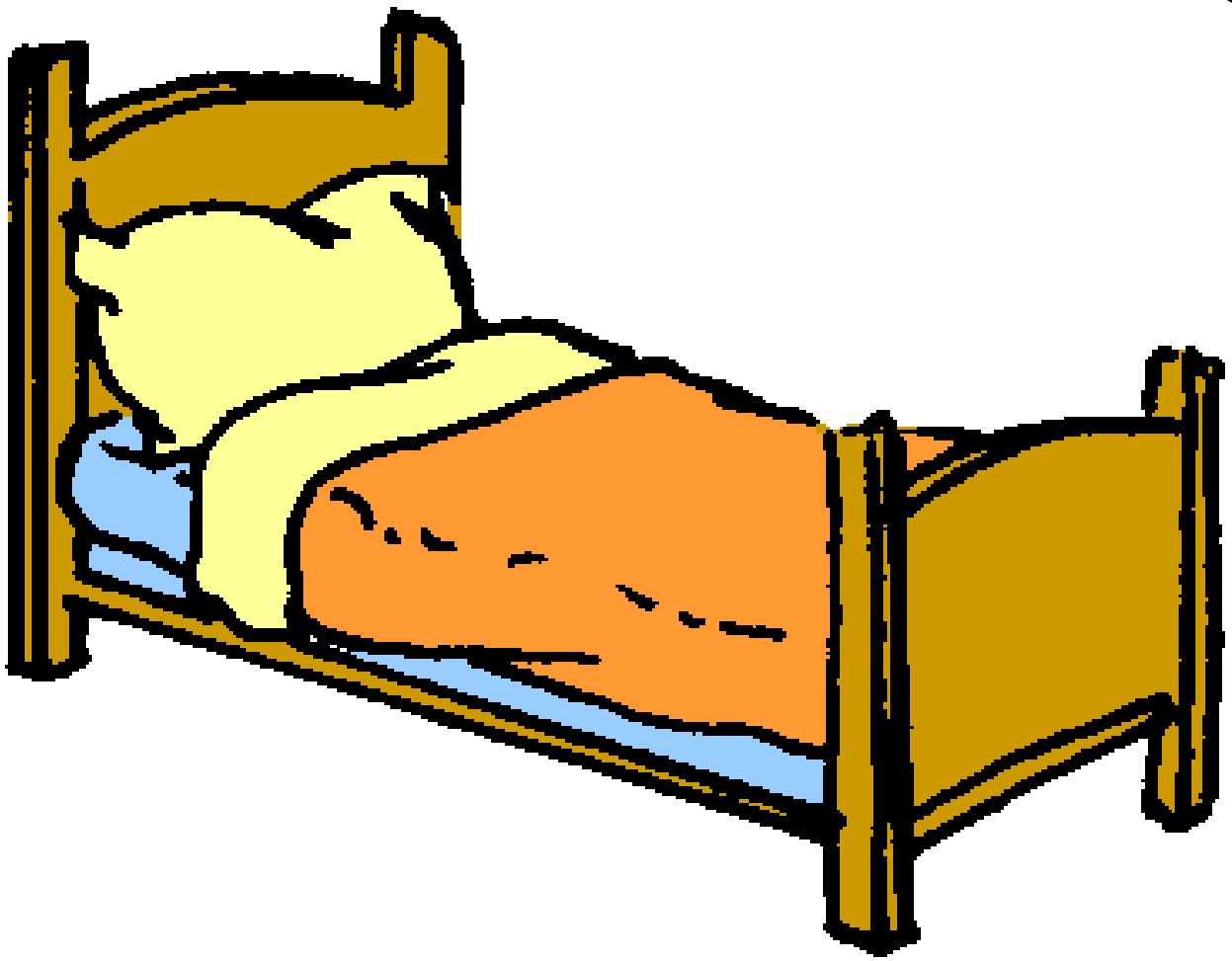


i

!

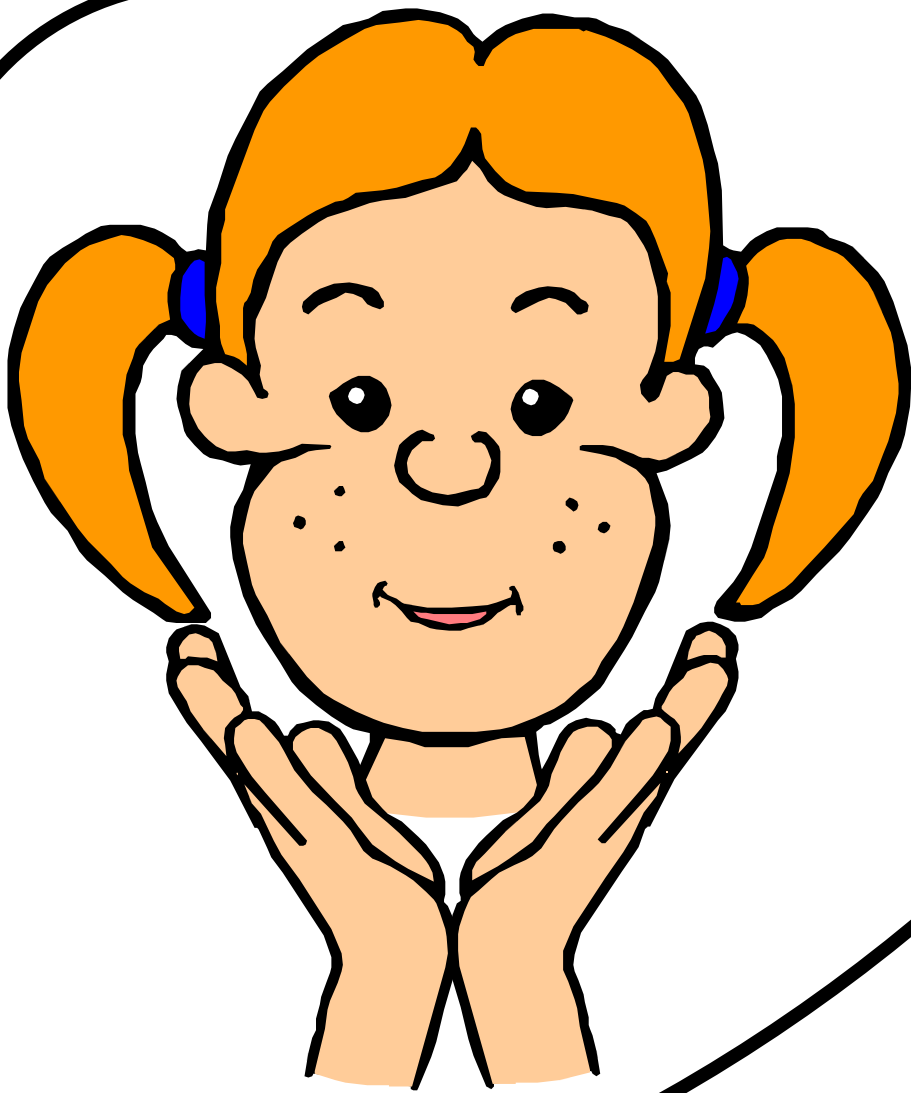
i

J



lit

lit



v V

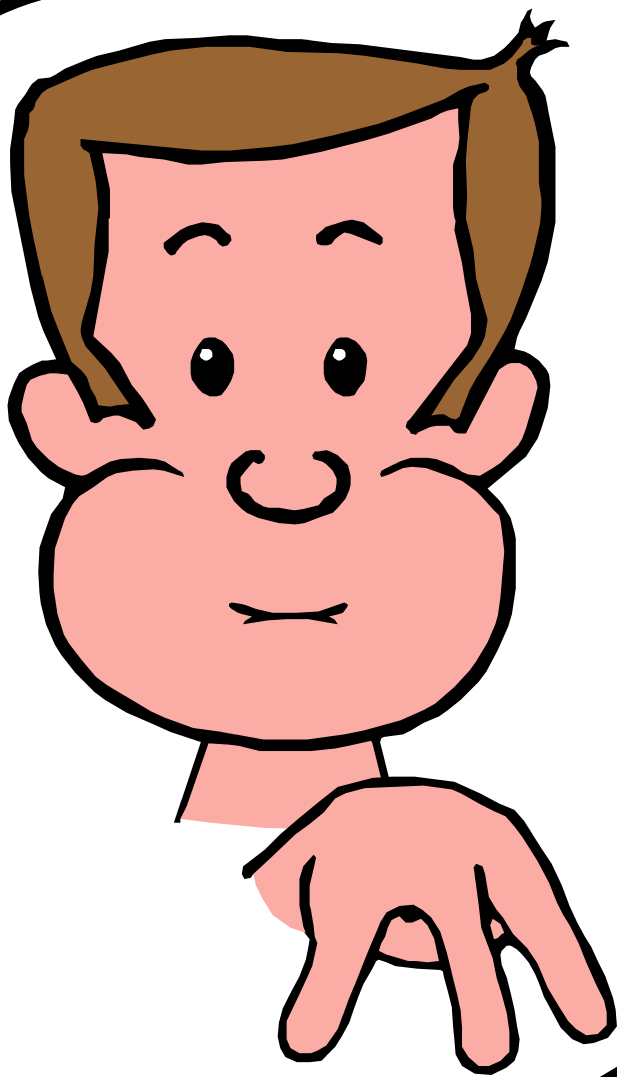
v

v



vélo

vélo



m

M

m

M



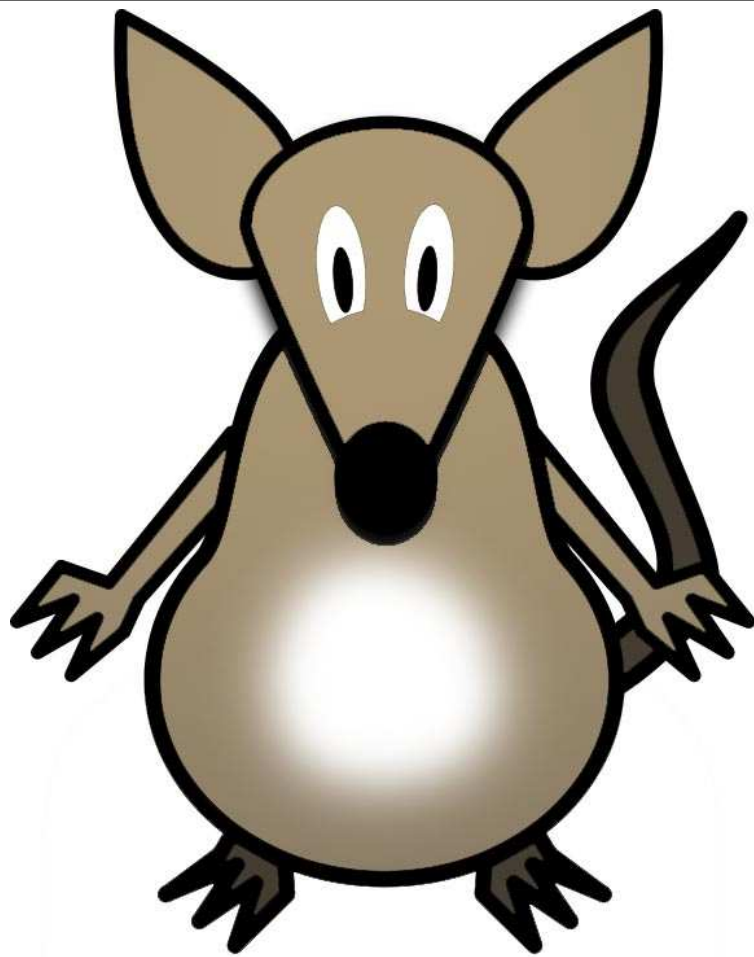
m mamie

m mamie



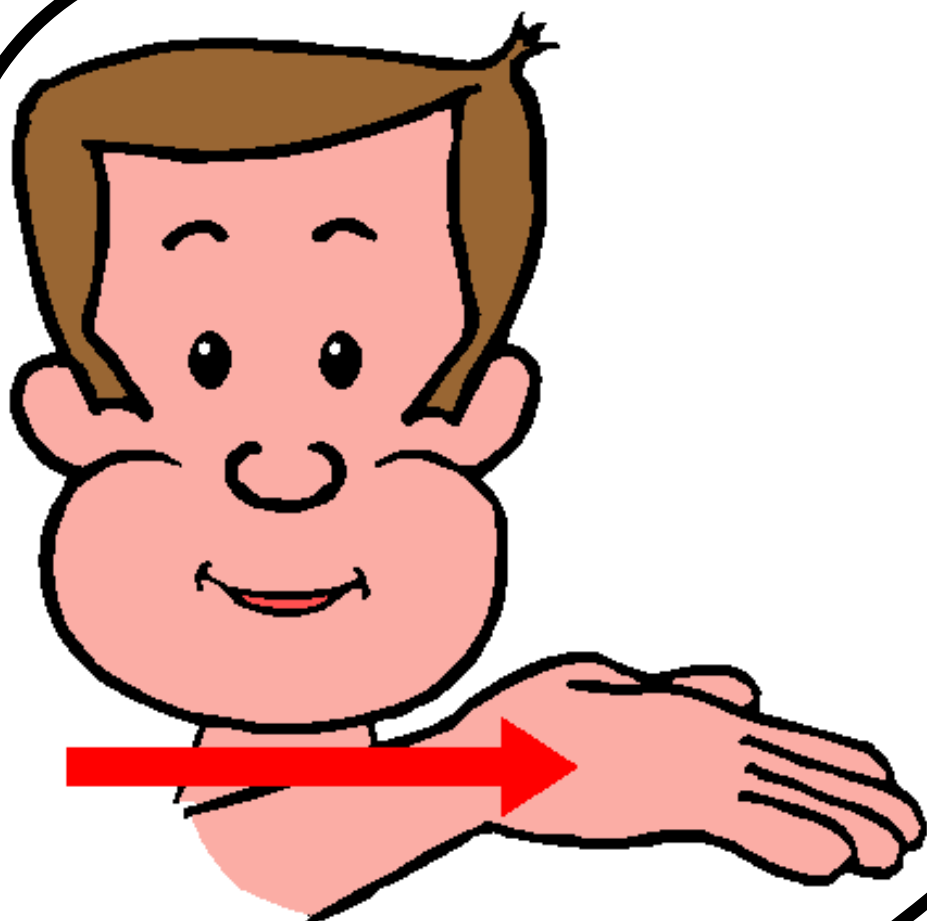
u U

u u



mulot

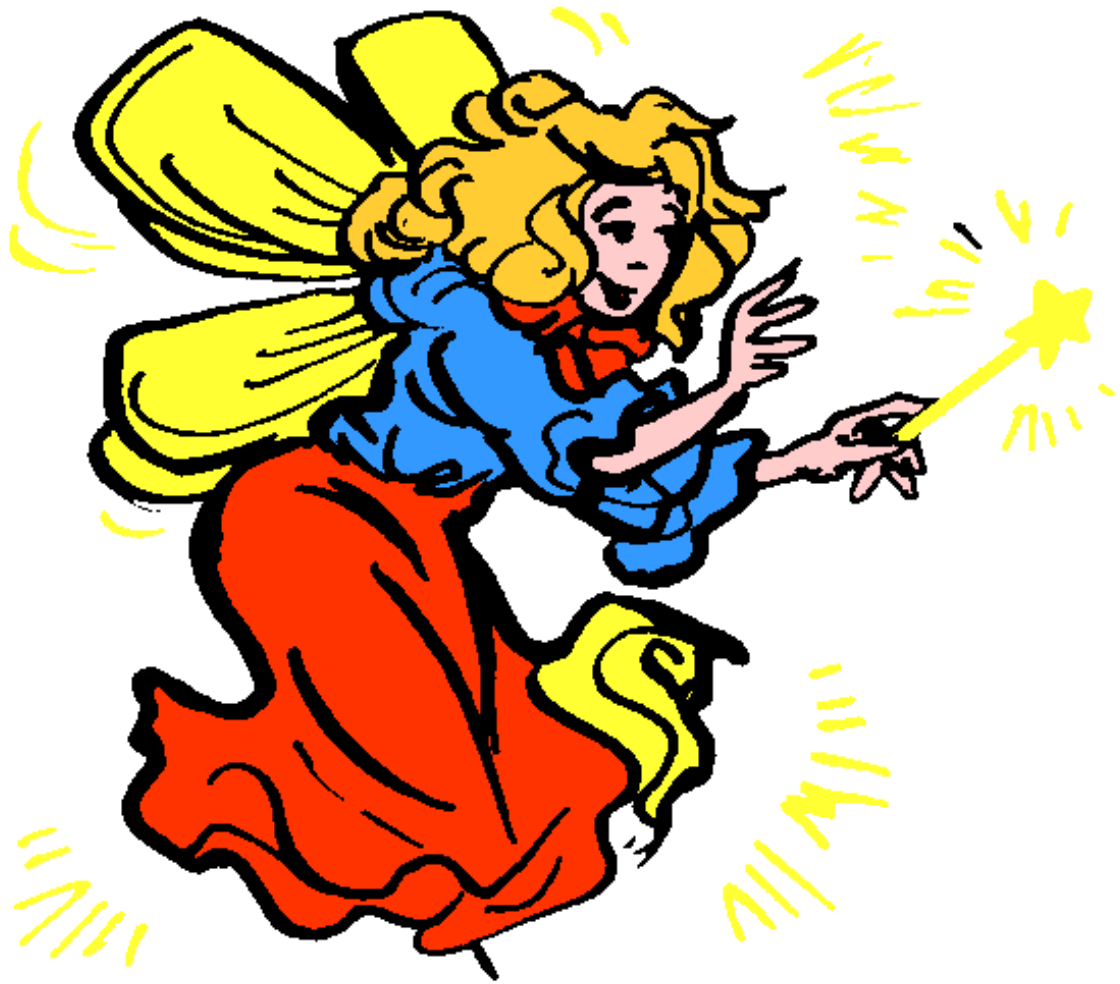
mulot



f F

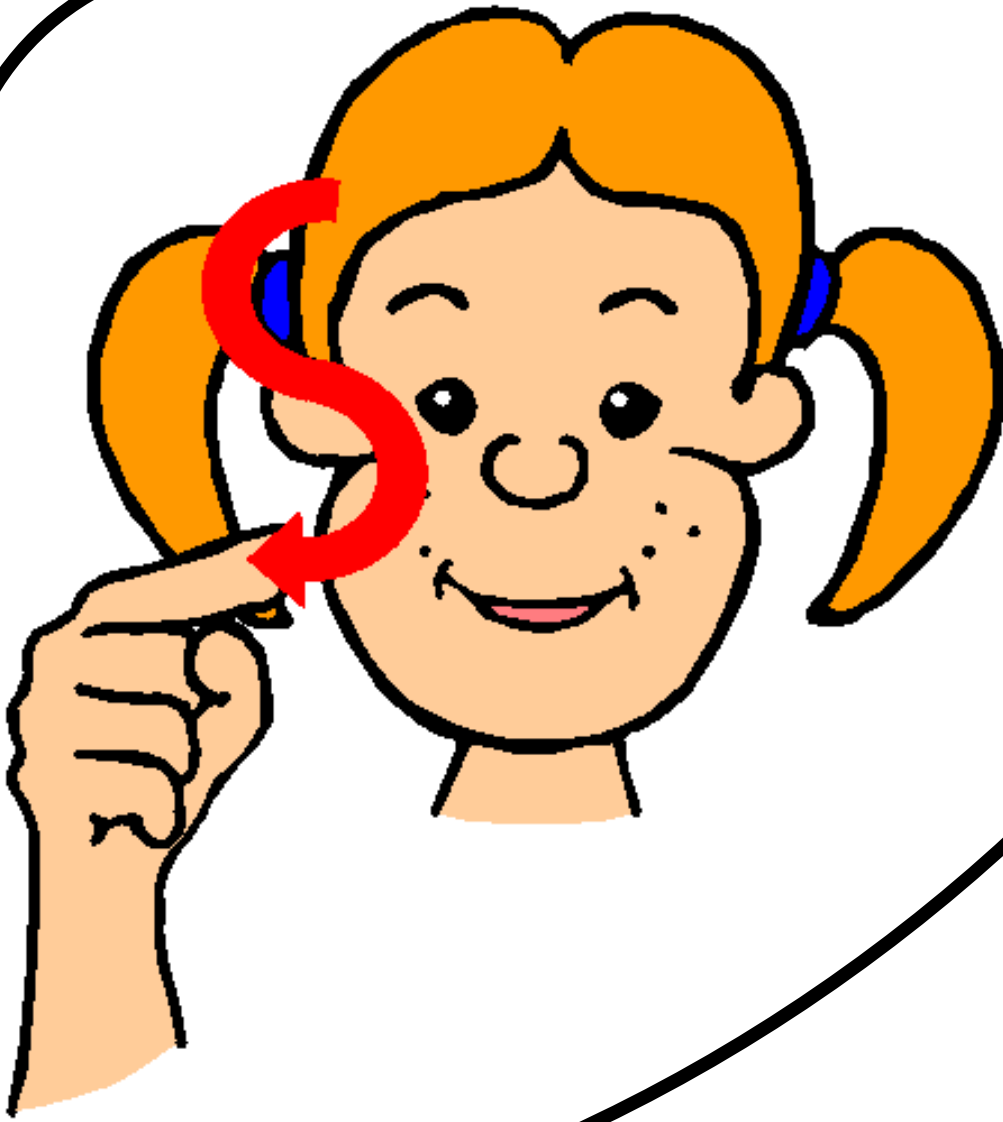
f

F



fée

fée



s

S

ſ

ſ



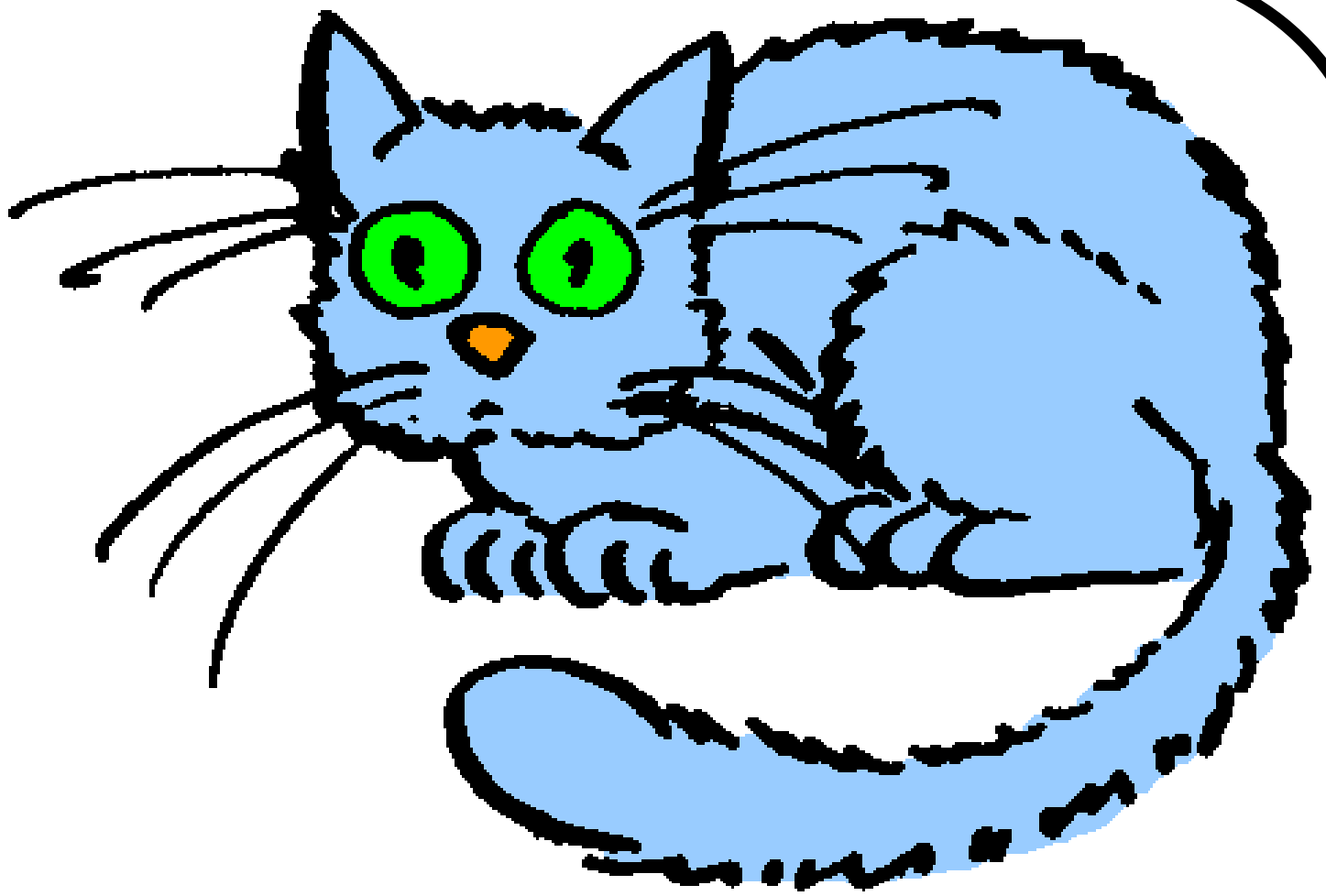
sali

sali



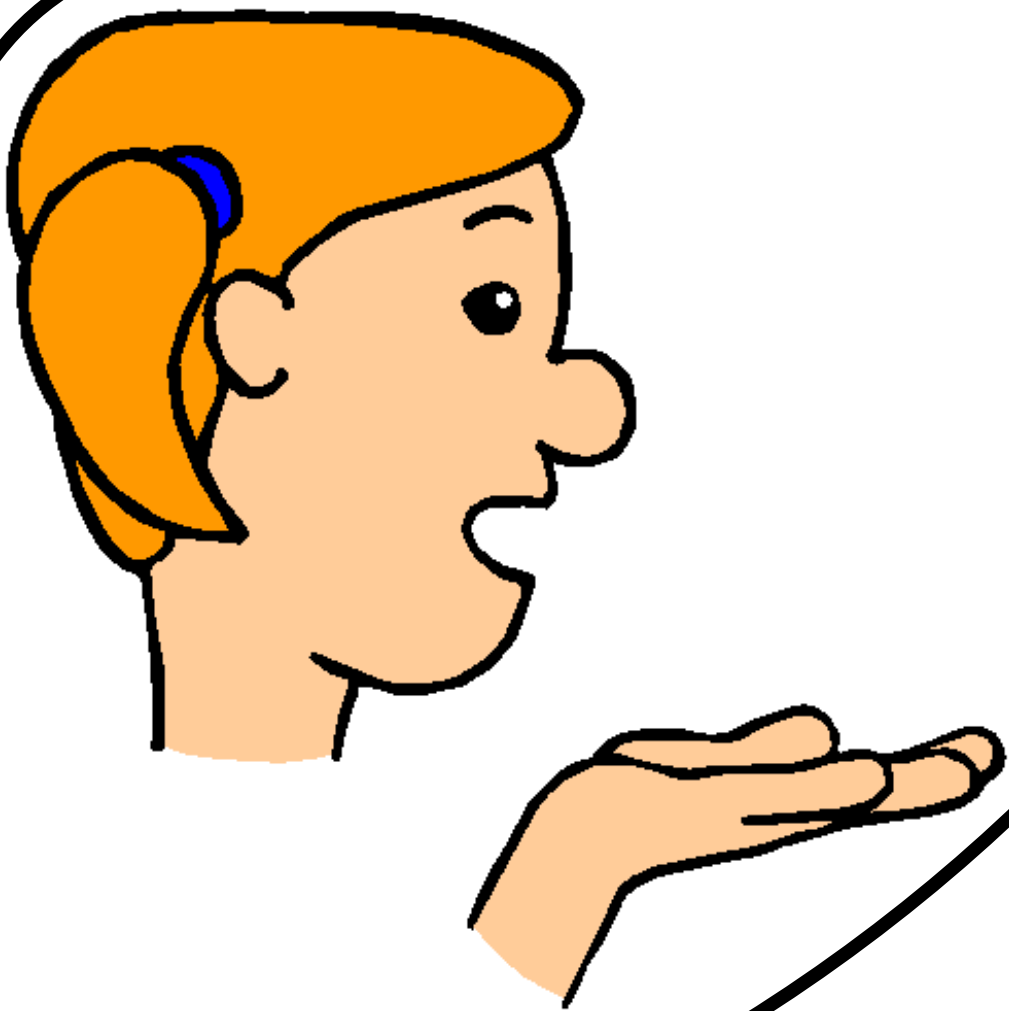
ch Ch

ch Ch



n chat

chat

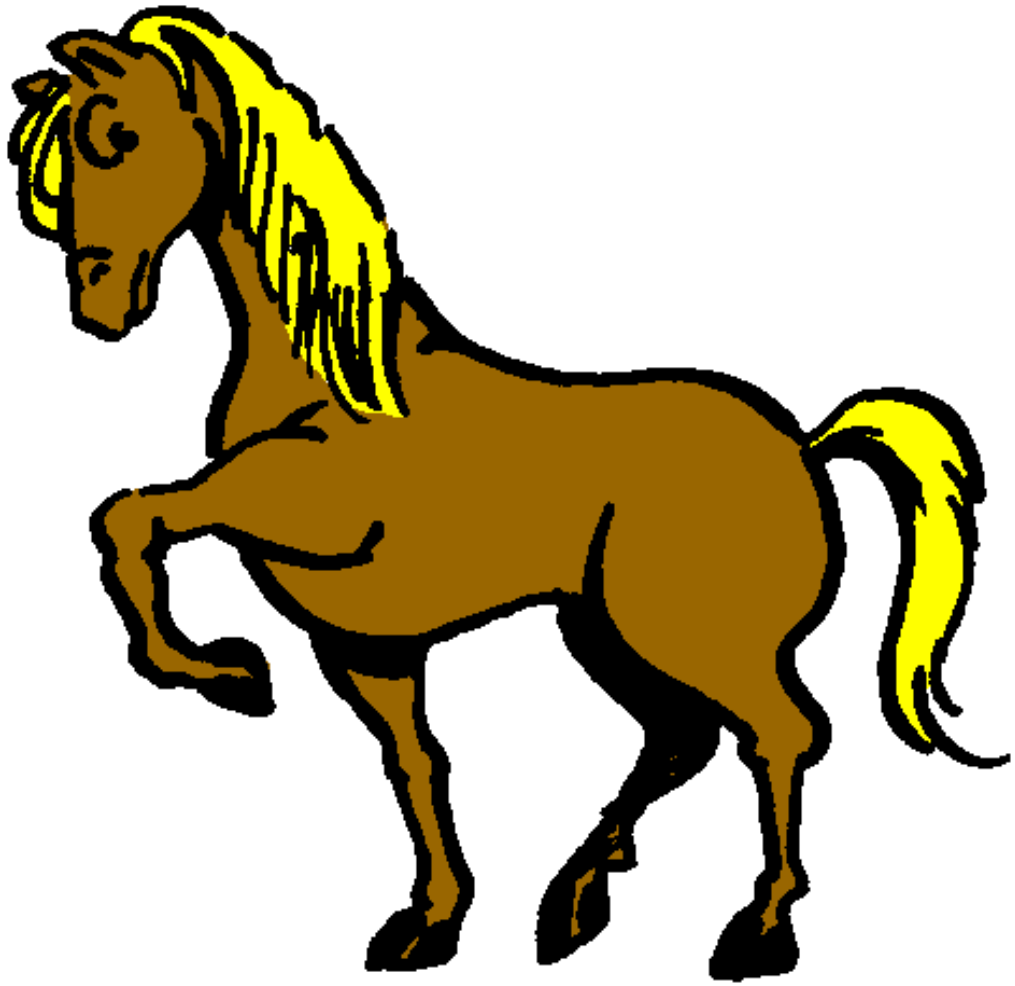


e

E

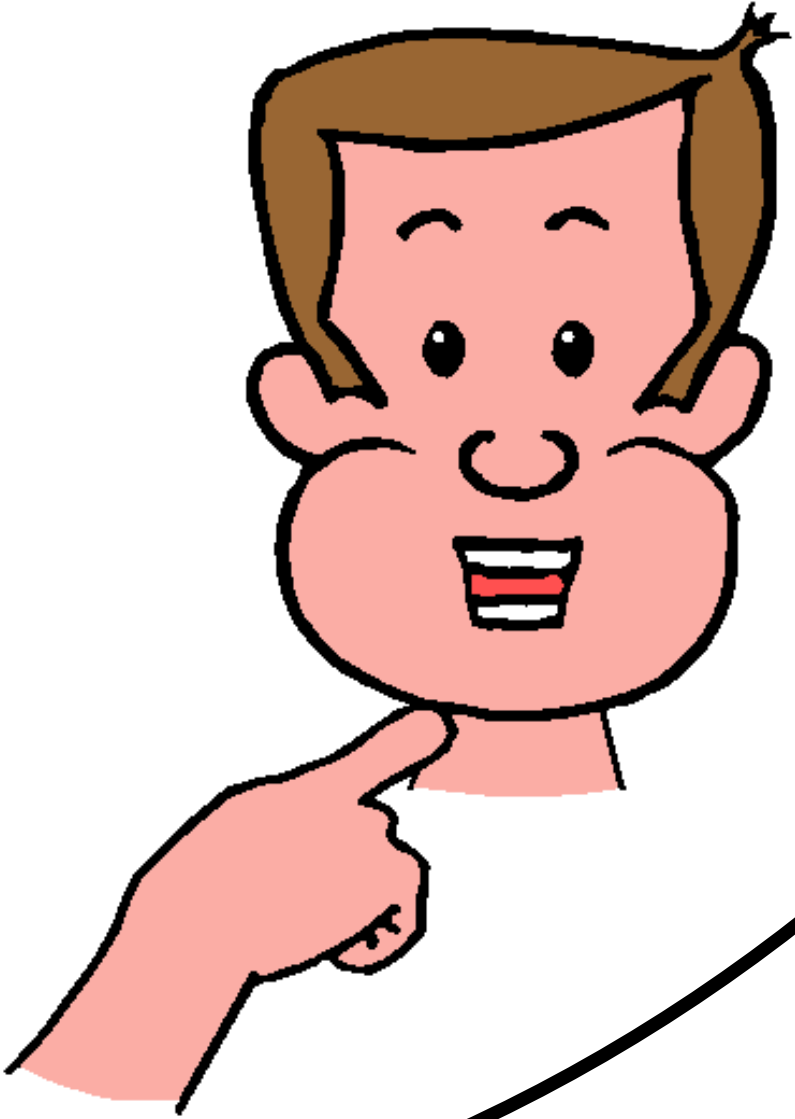
e

E



cheval

cheval

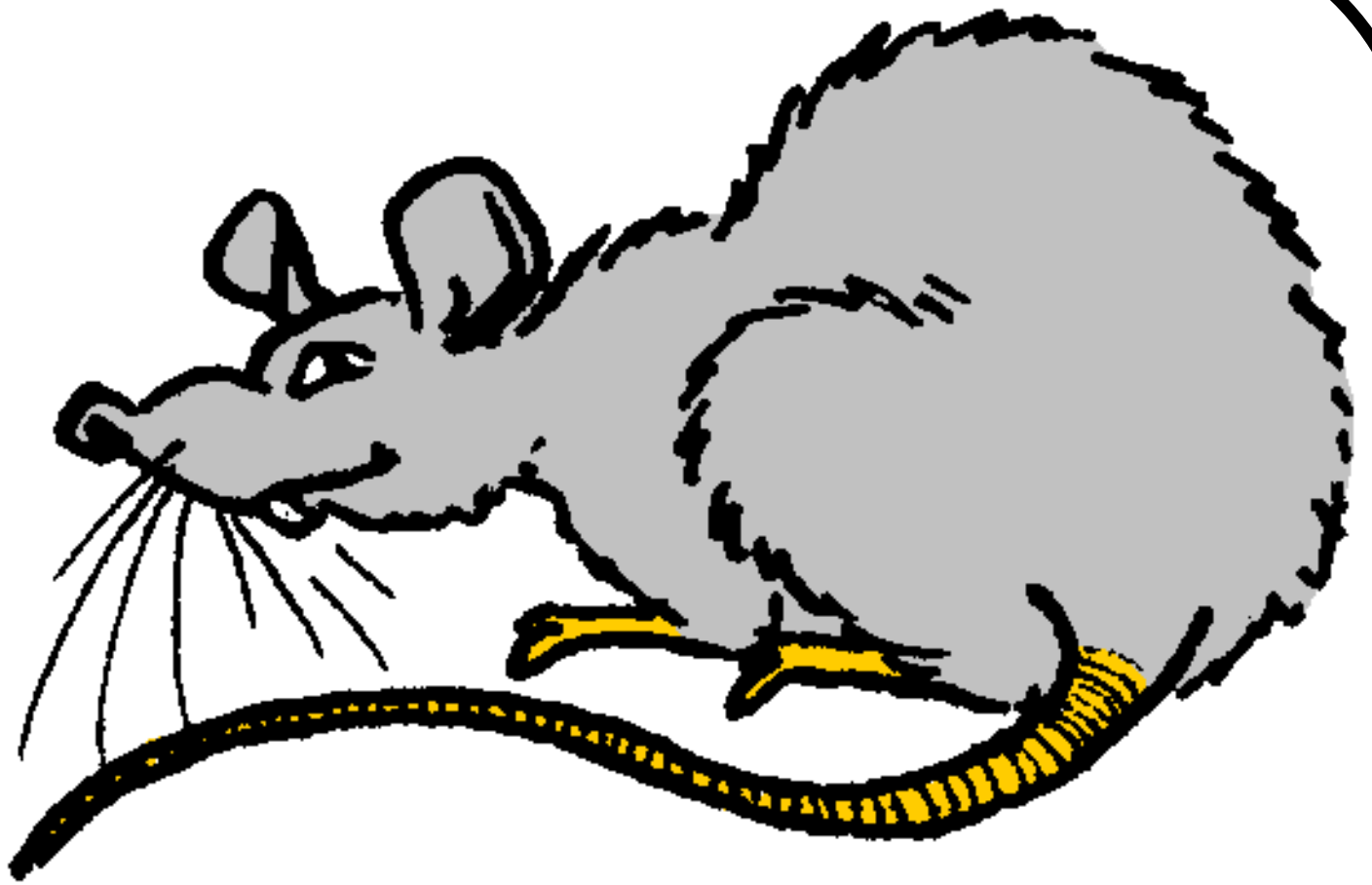


r

R

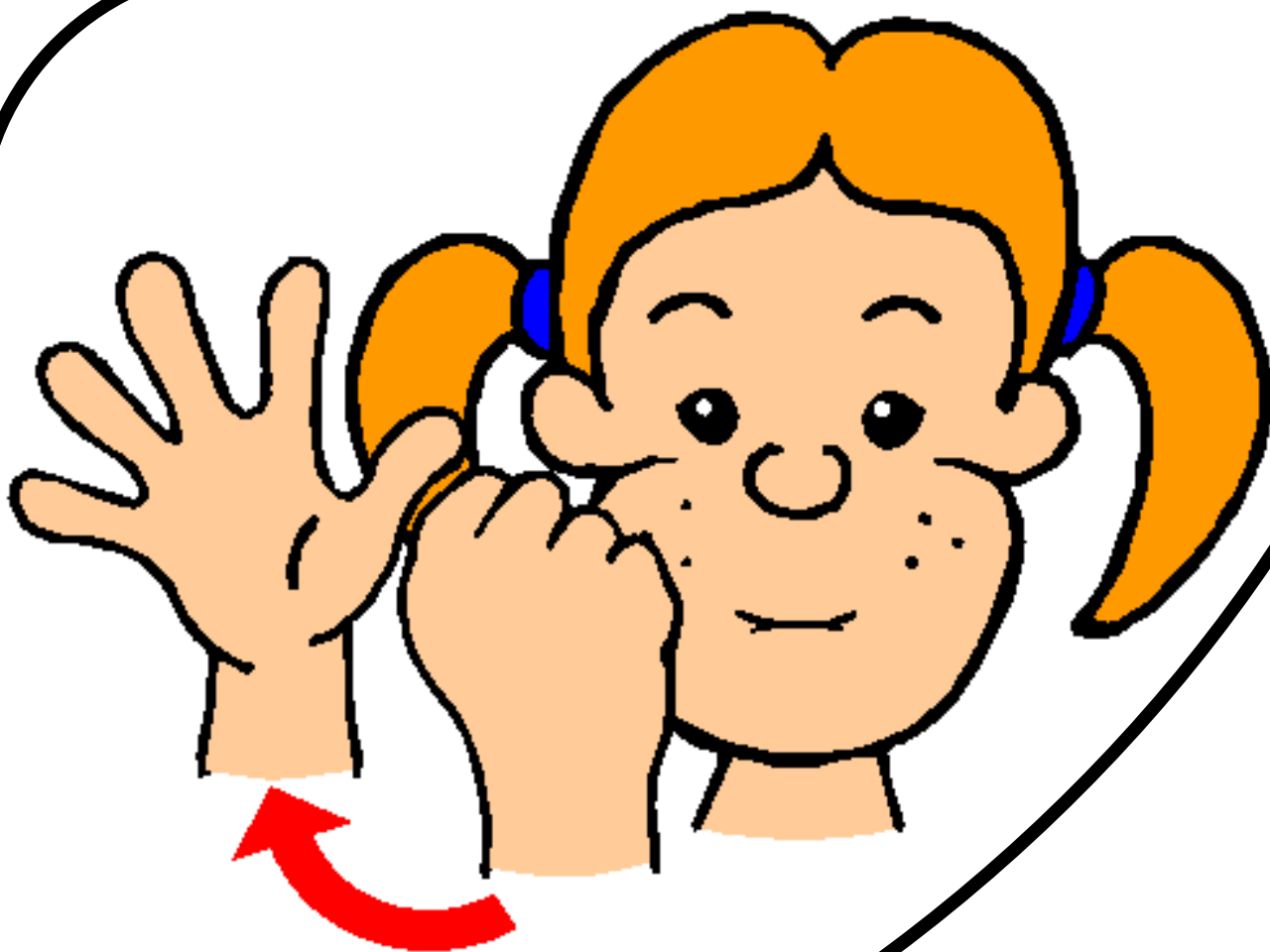
r

R



rat

rat



p

P

↑

↓



p pull

pull

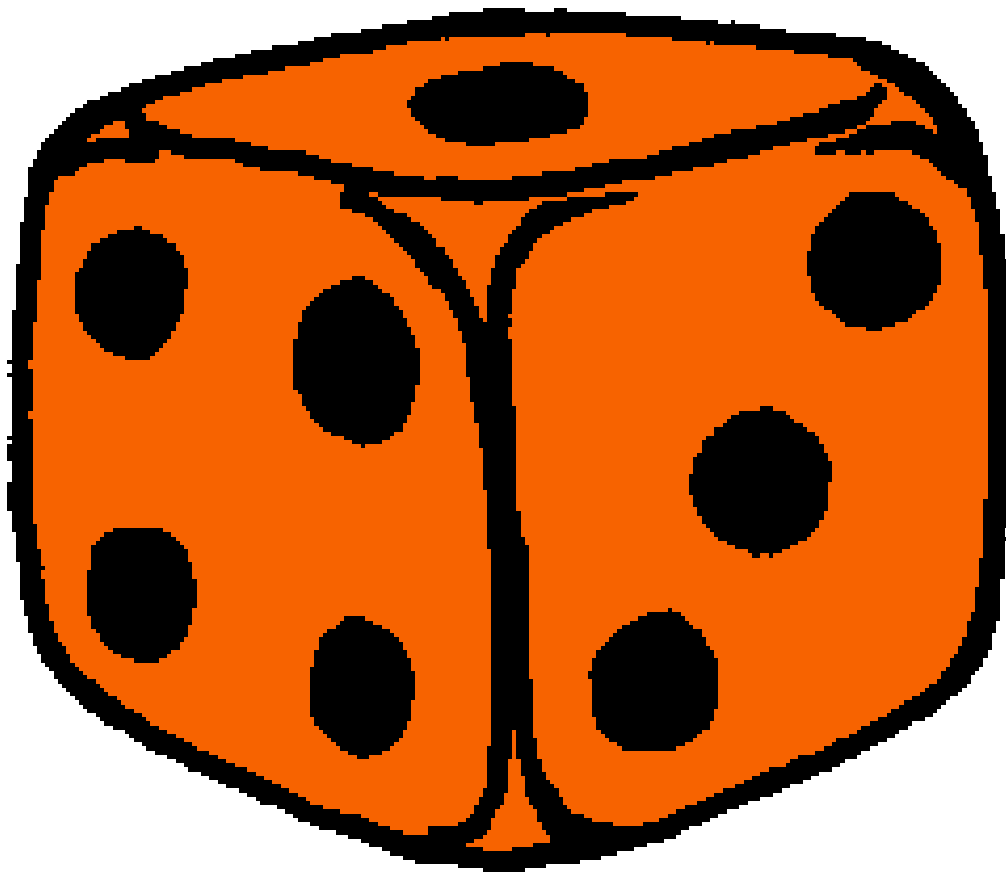


d

D

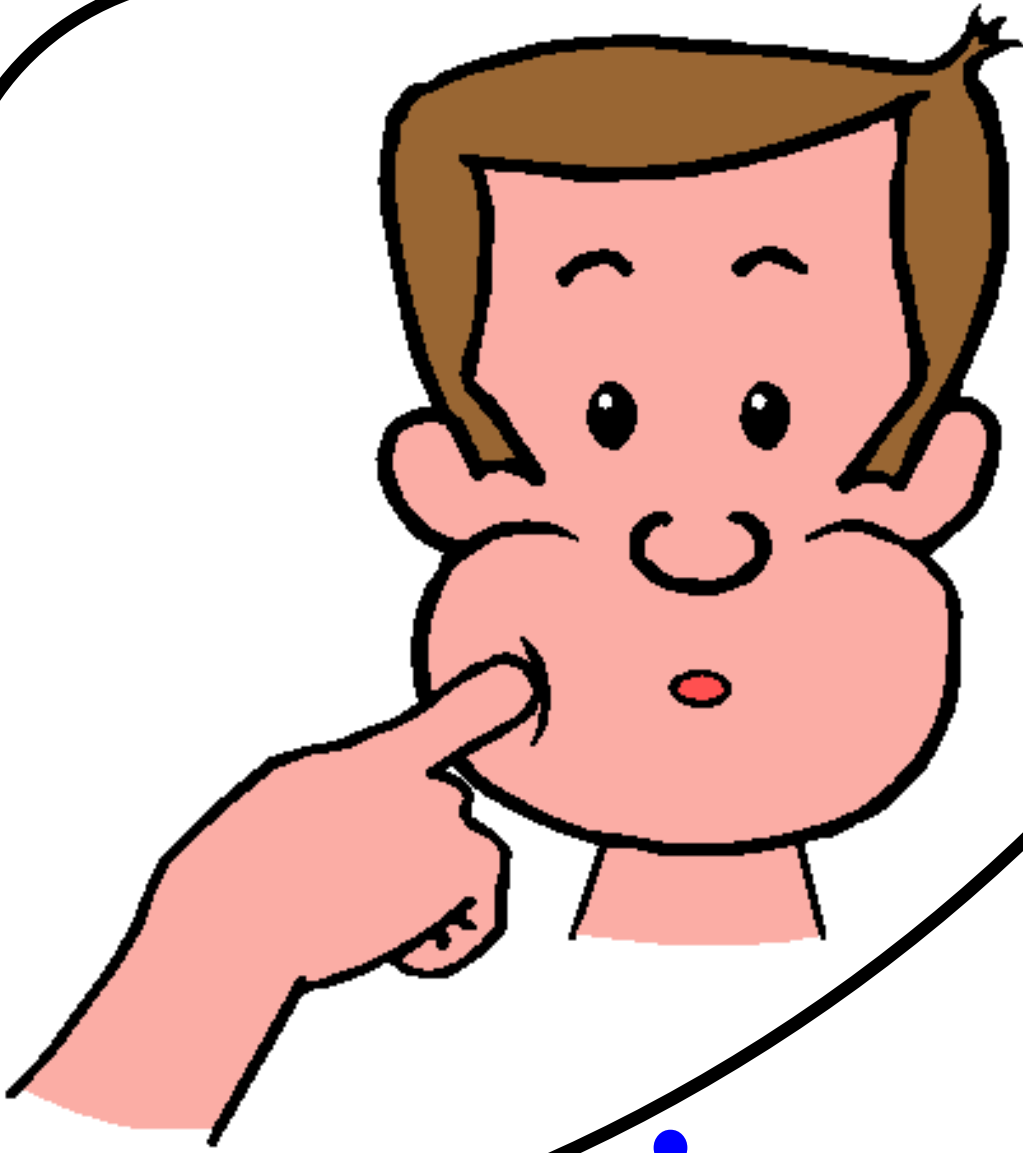
d

D



dé

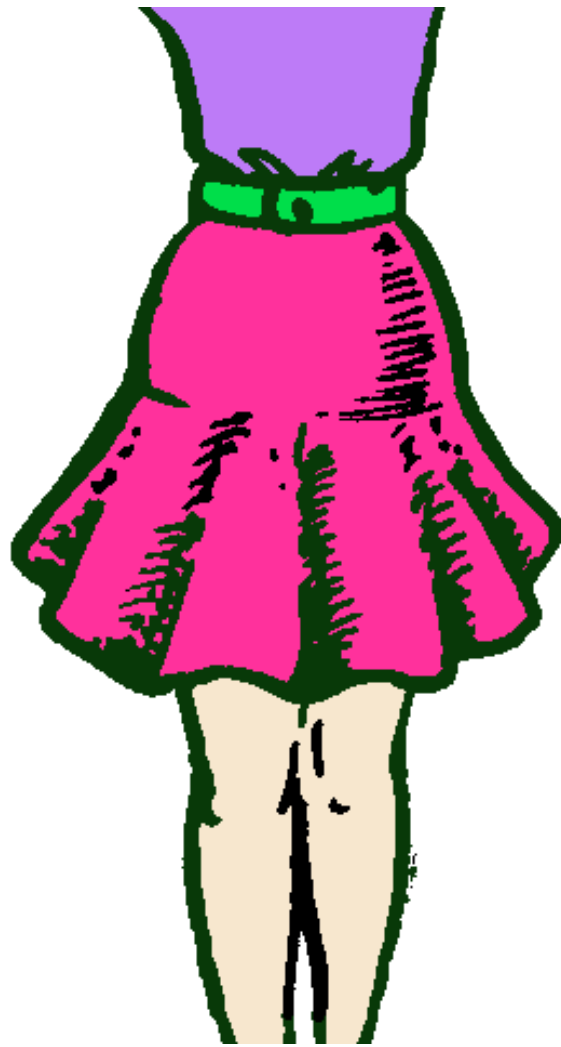
dé



j

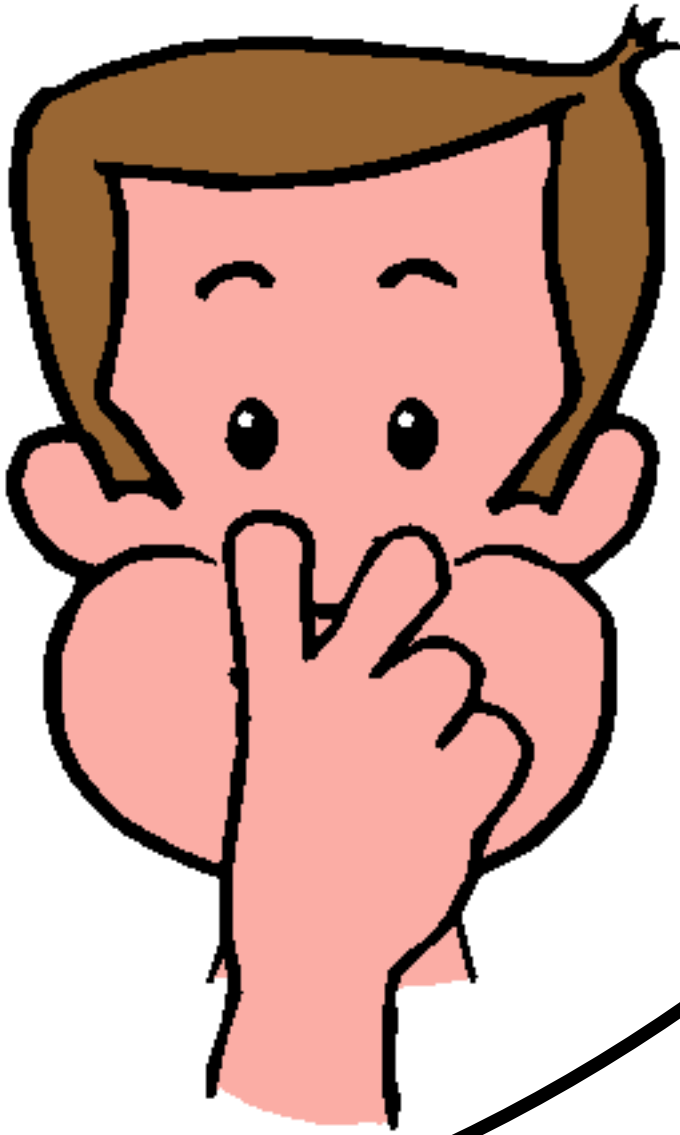
j

J



jupe

jupe



n

N

n

N



nid

nid

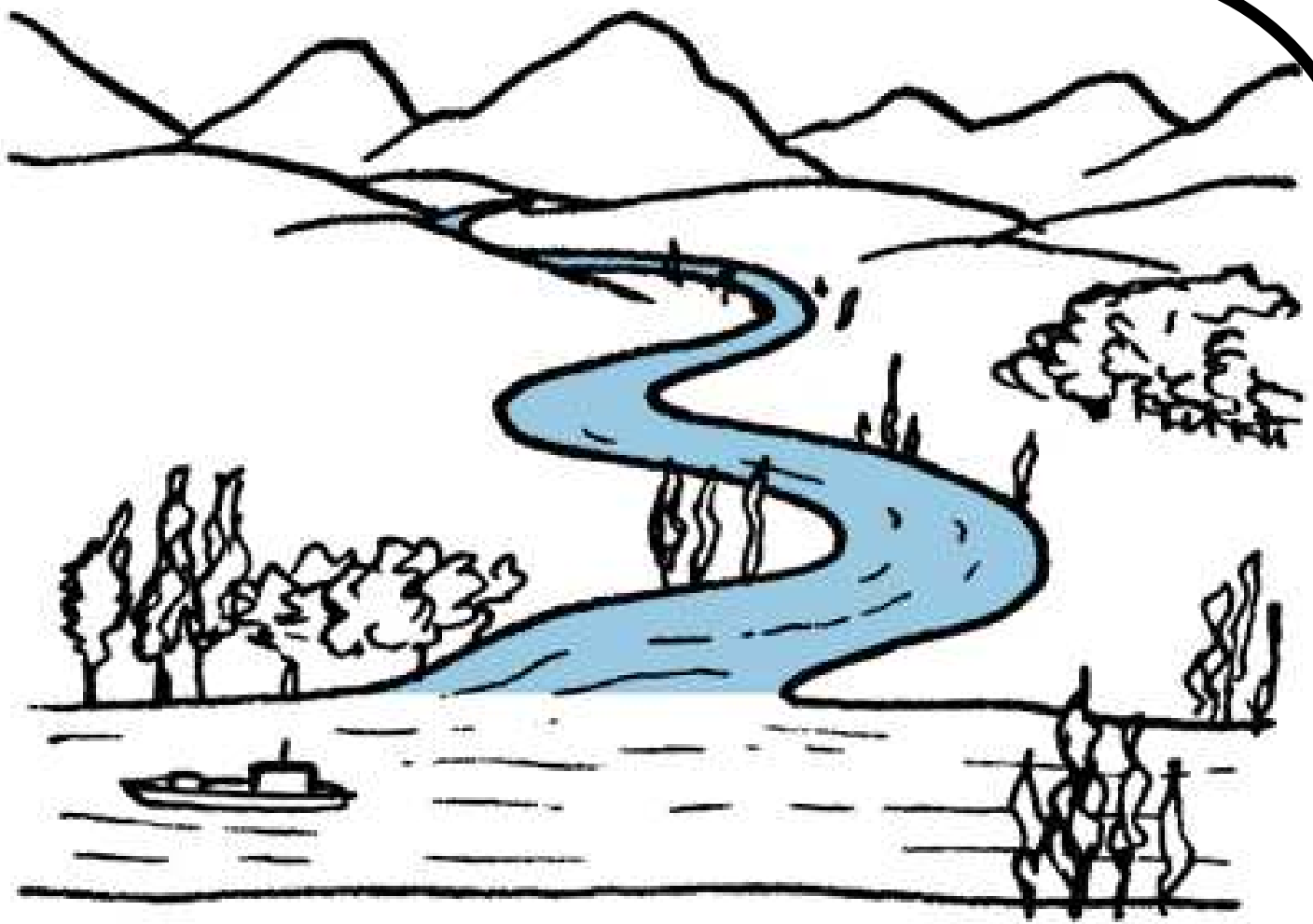


È

È

è

è



rivièrere

rivièrere



È

Ê

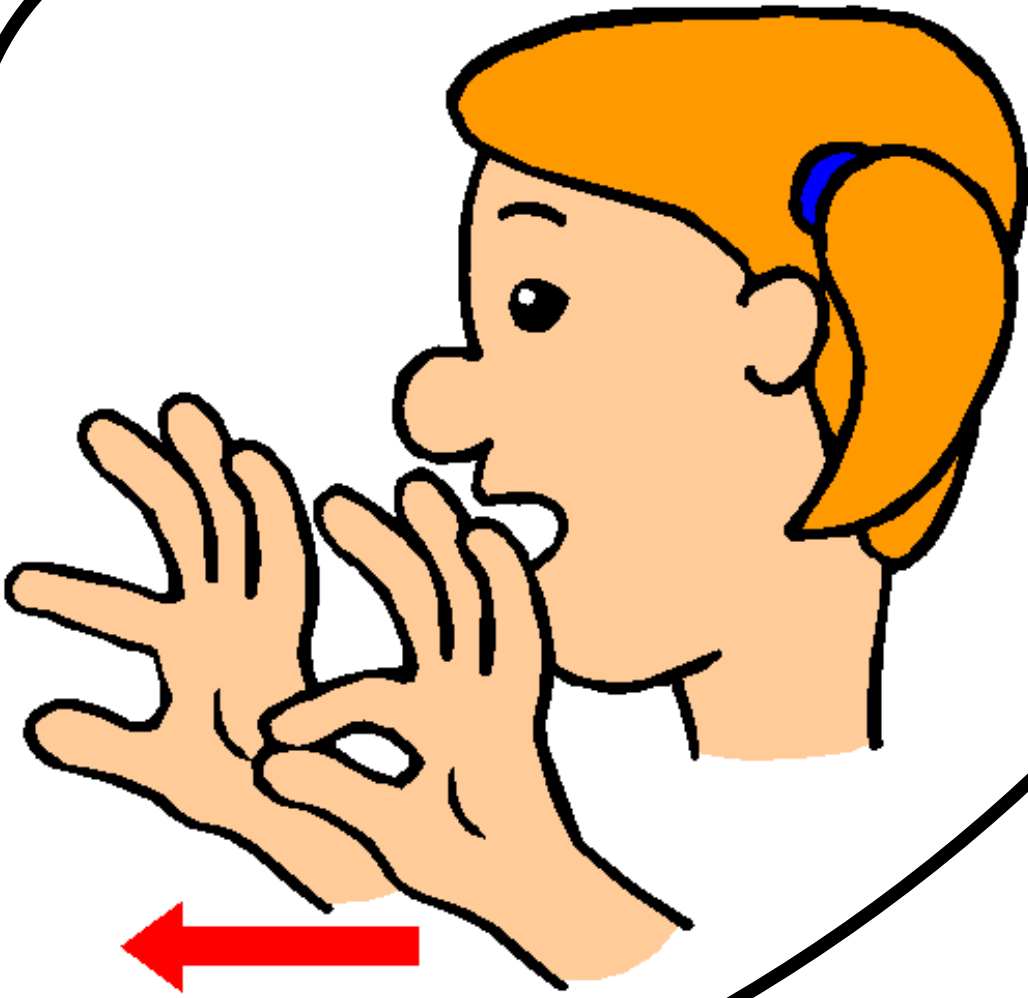
è

ê



pêche

pêche



t

T

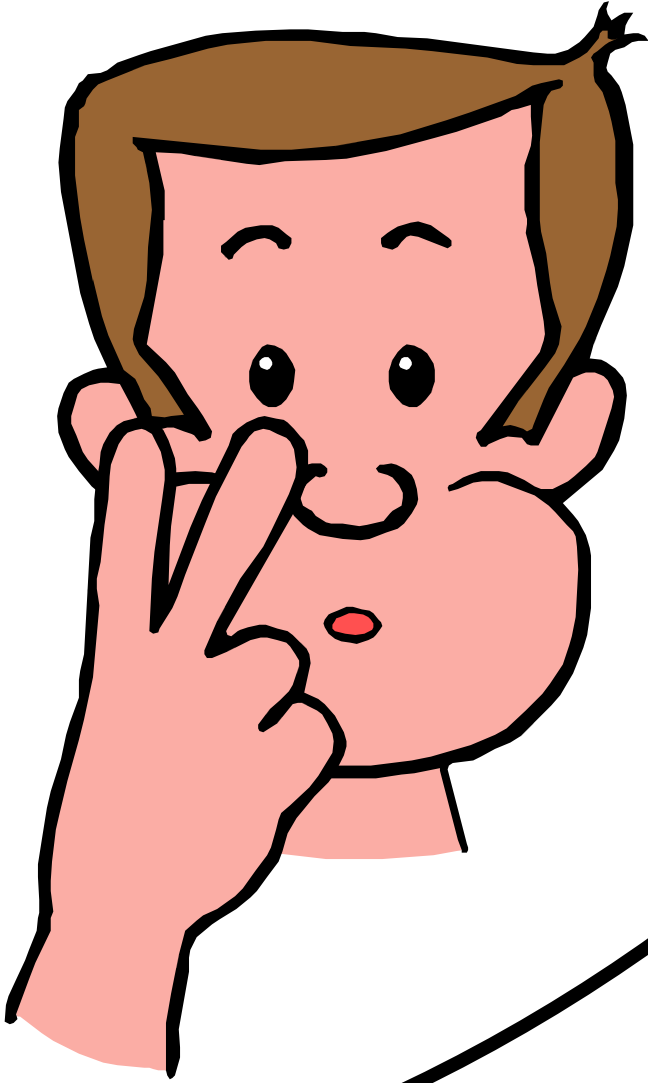
т

Т



tarte

tarte



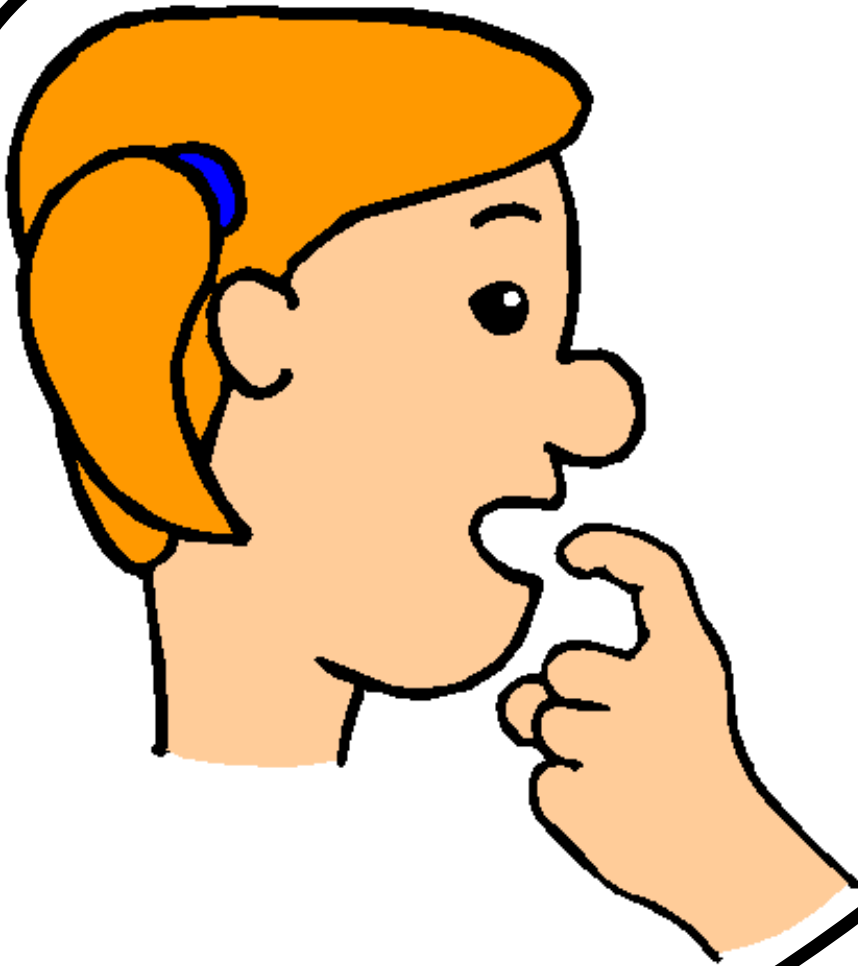
Un

un

1

un

un

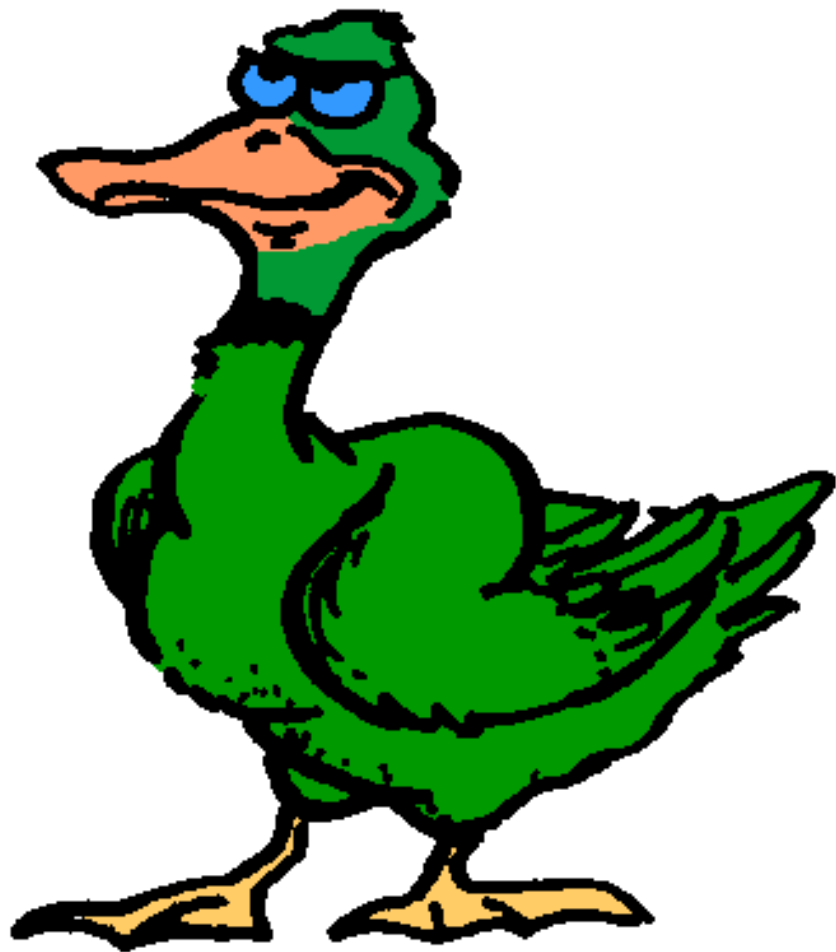


c

C

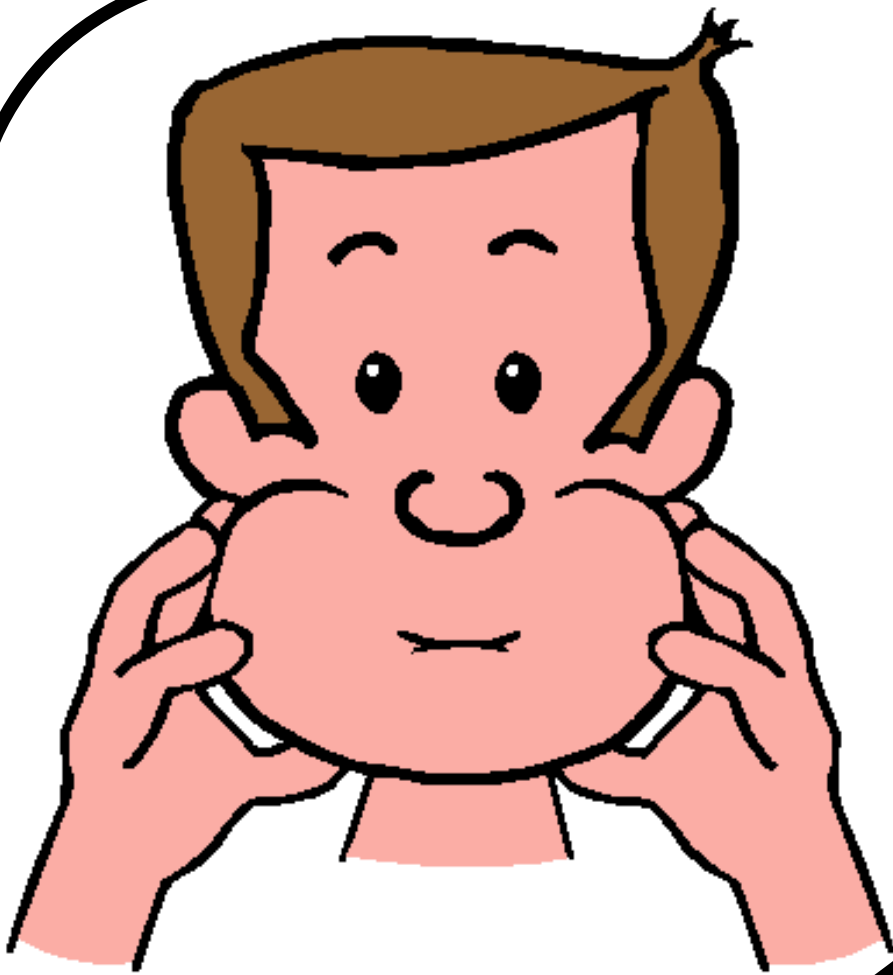
c

c



c anard

canard



b

B

b

B



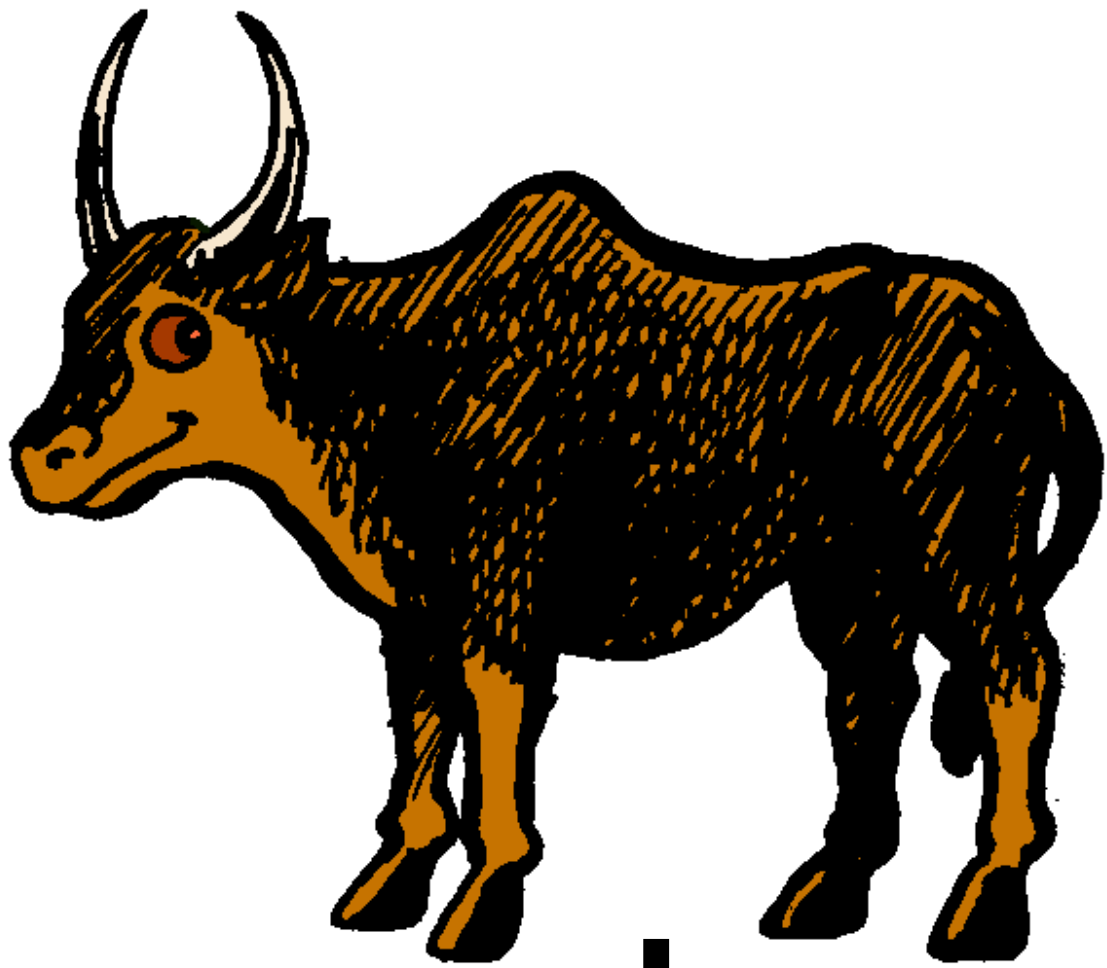
bus

bus



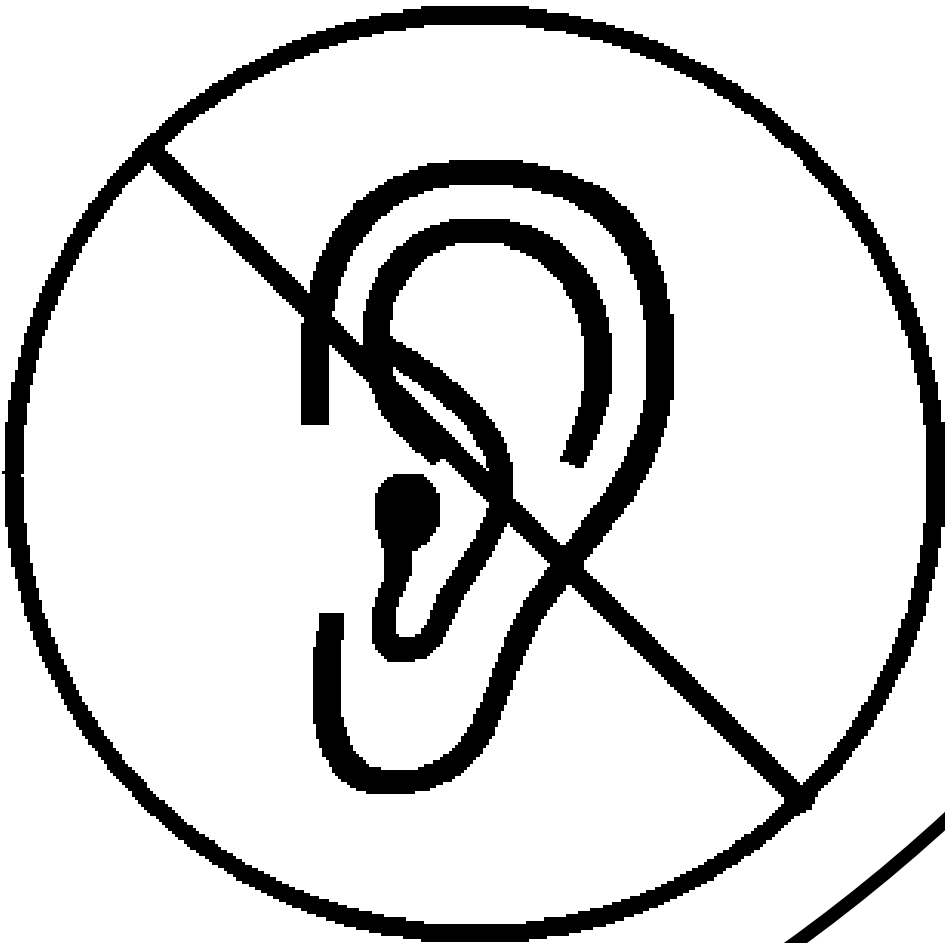
z
Z

z
Z



zébou

zébou



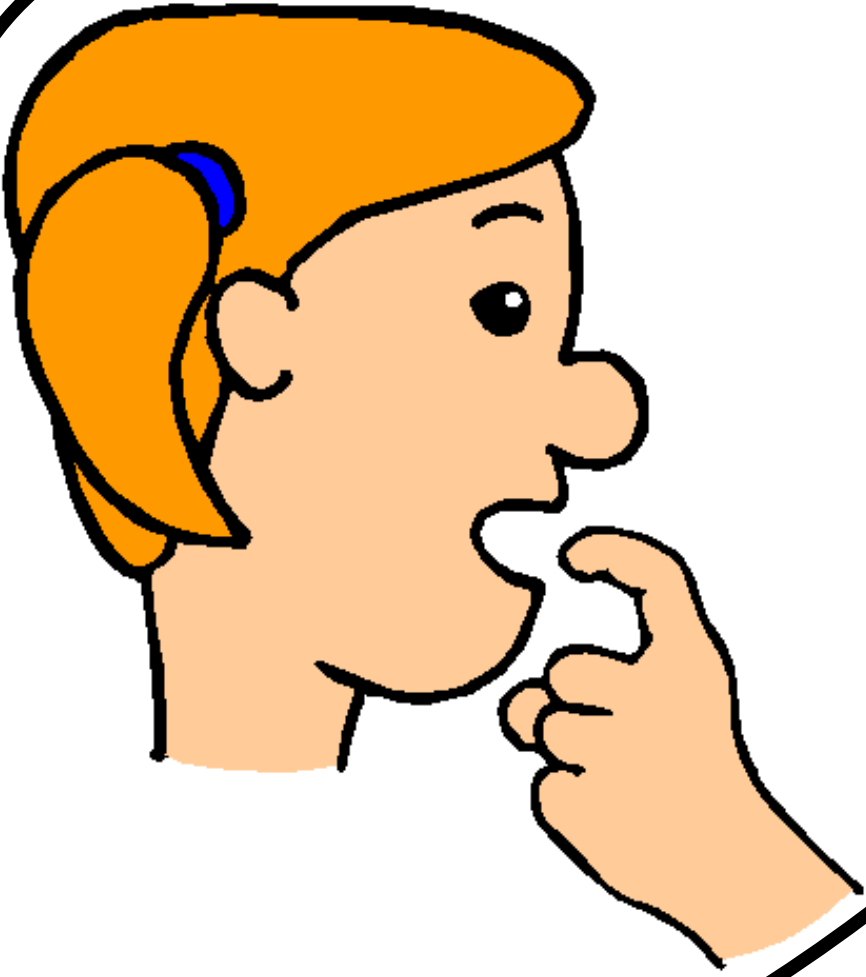
h
H

h
H



hulotte

hulotte



q

h

Q

Q



flaque

flaque



g

gg

g

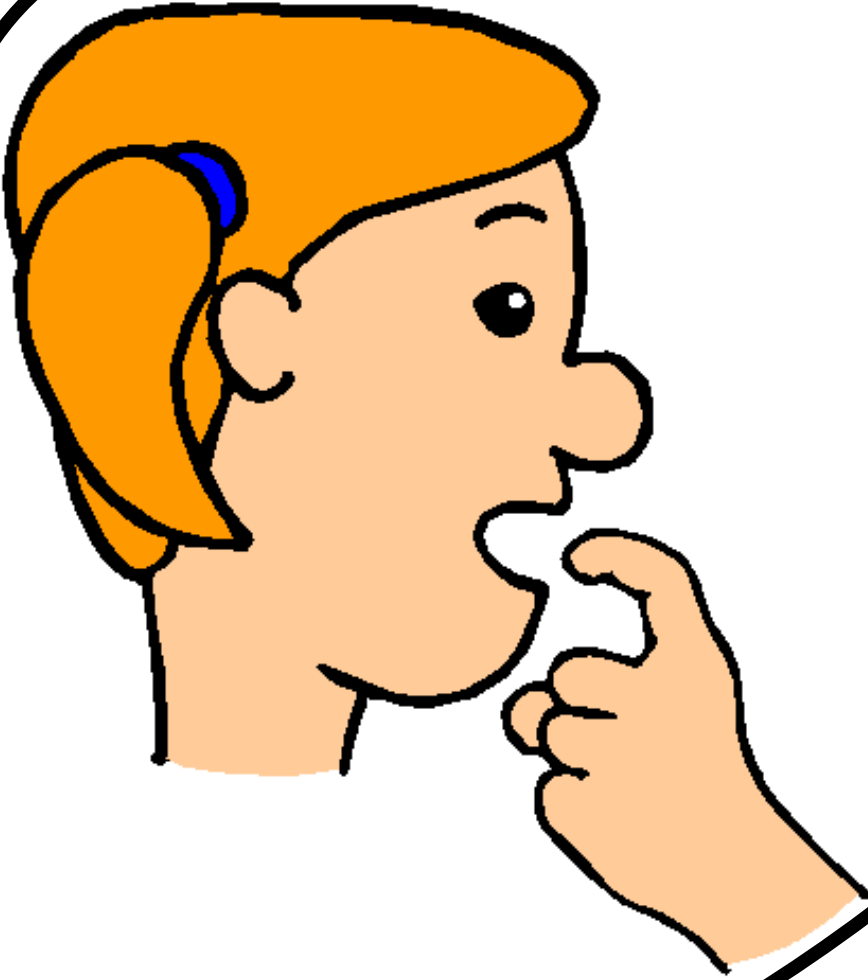
G

g



guêpe

guêpe



q

Q

q

2

Q

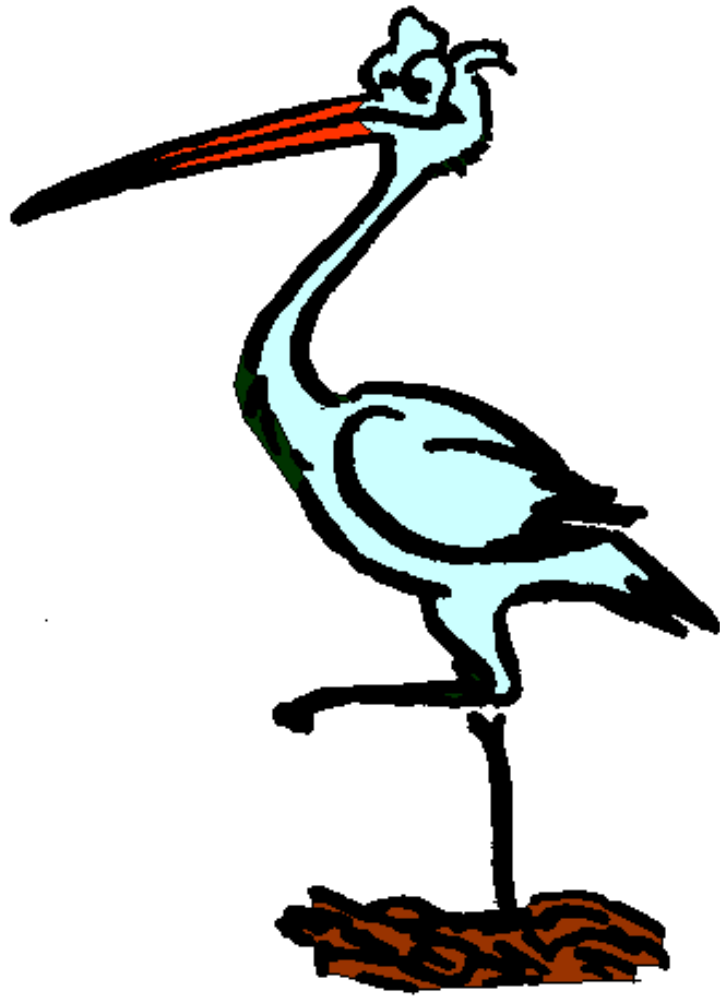


flaque

flaque

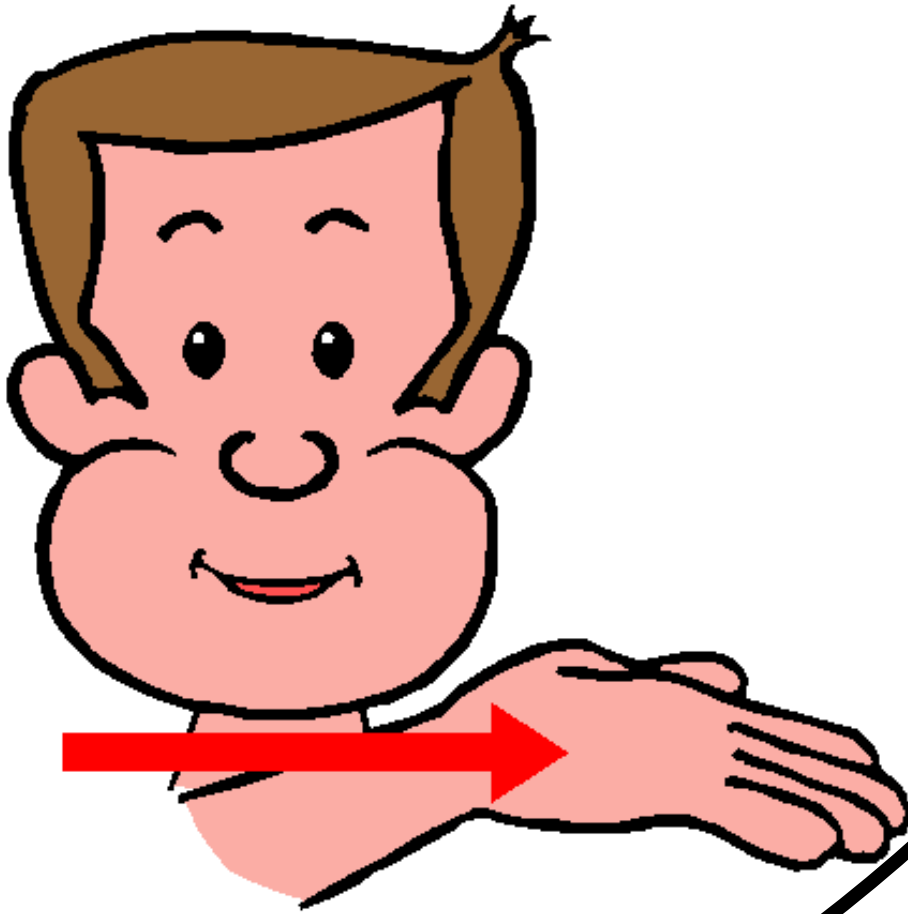


gn Gn
gn gn



cigogne

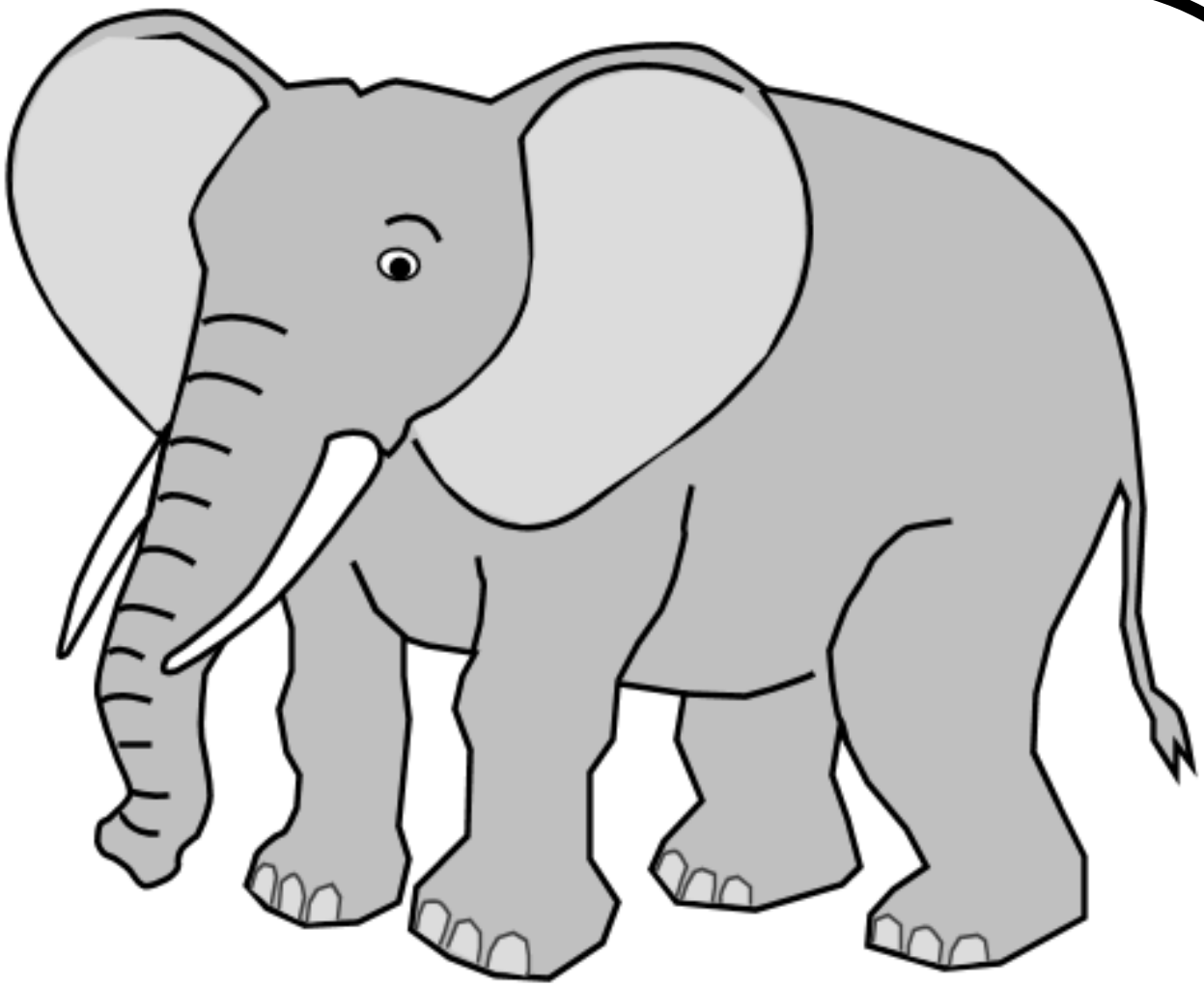
cigogne



ph Ph

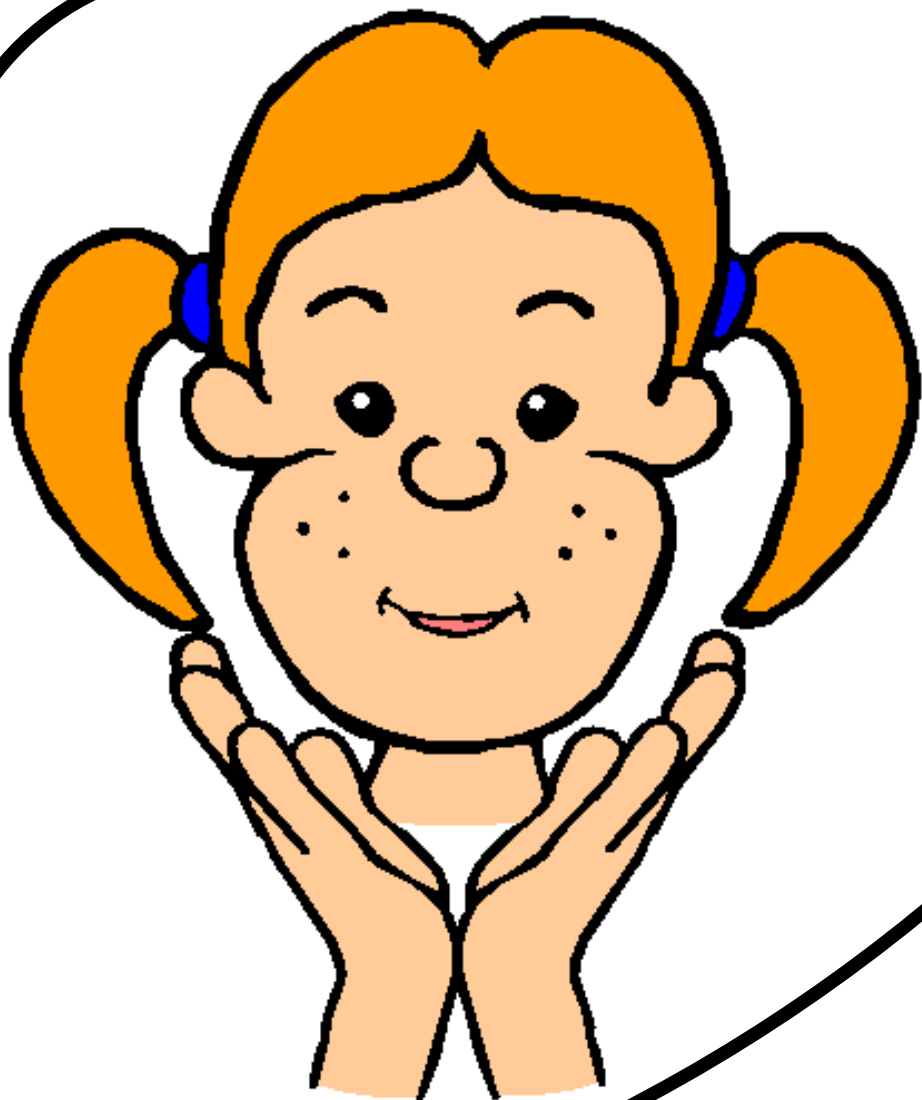
ph

Ph



éléphant

éléphant



w

W

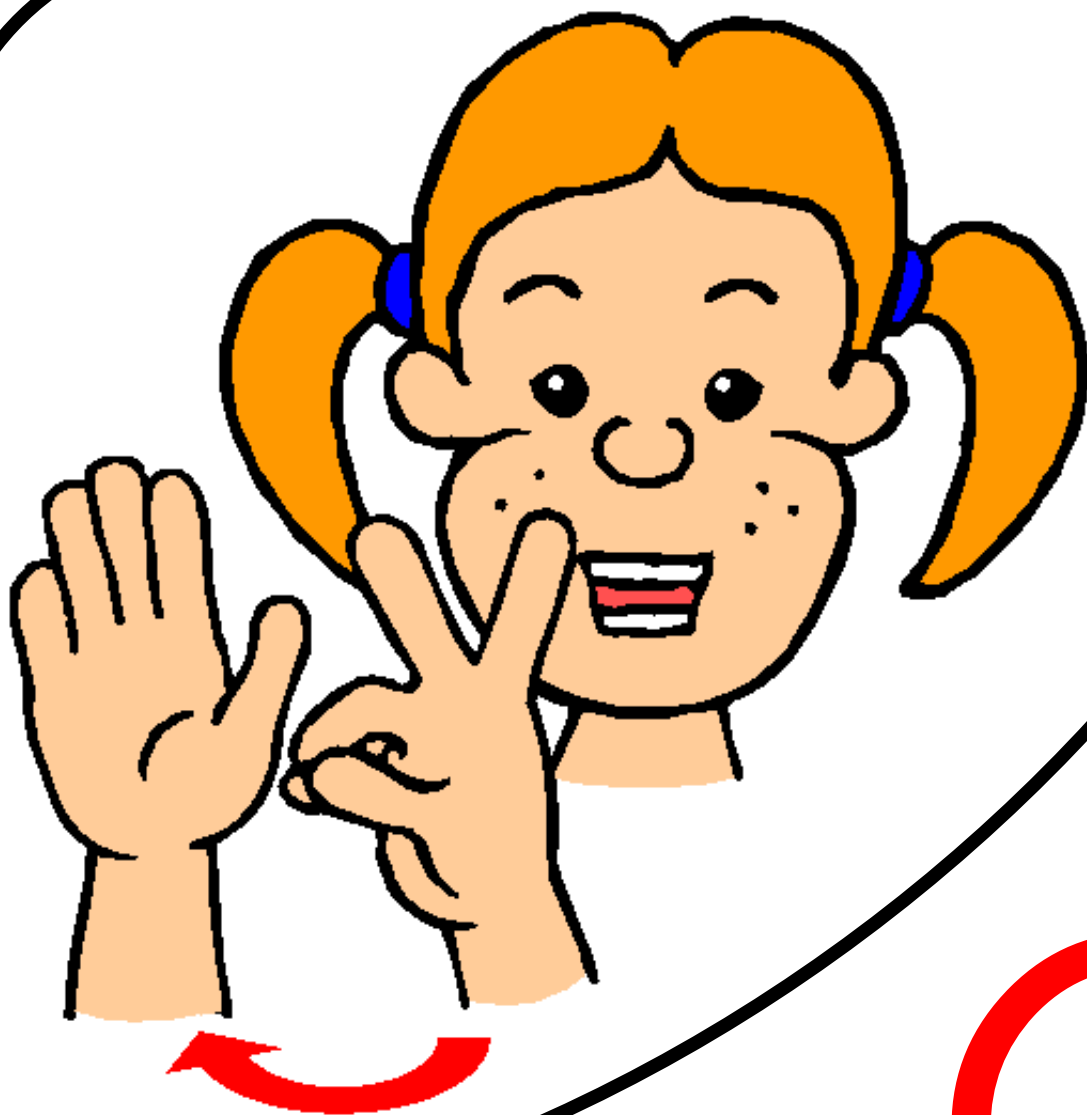
w

W



wagon

wagon



Oi

Oi

oi

Oi



noir

noir



ou

ou

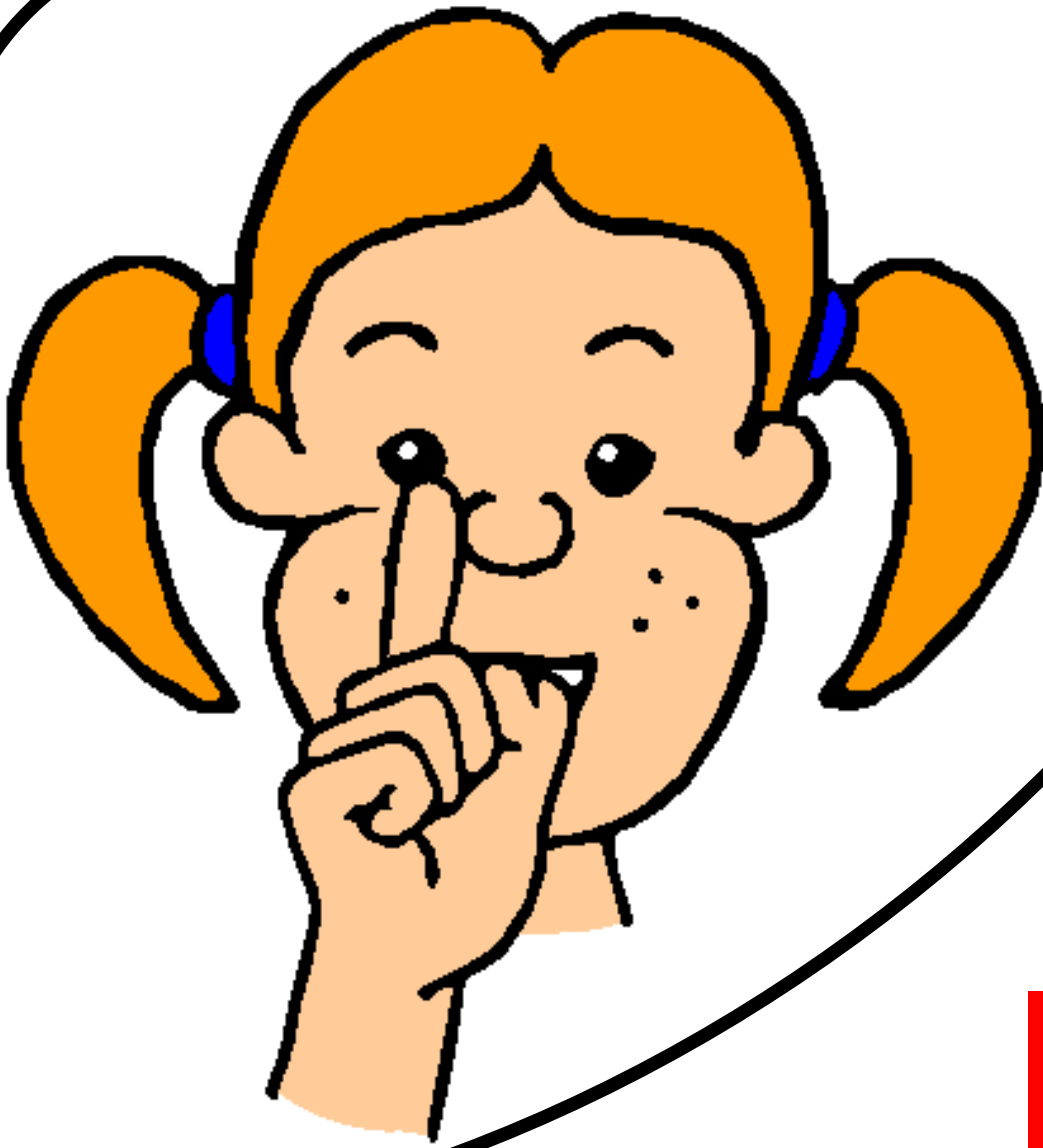
Ou

Ou



loup

loup

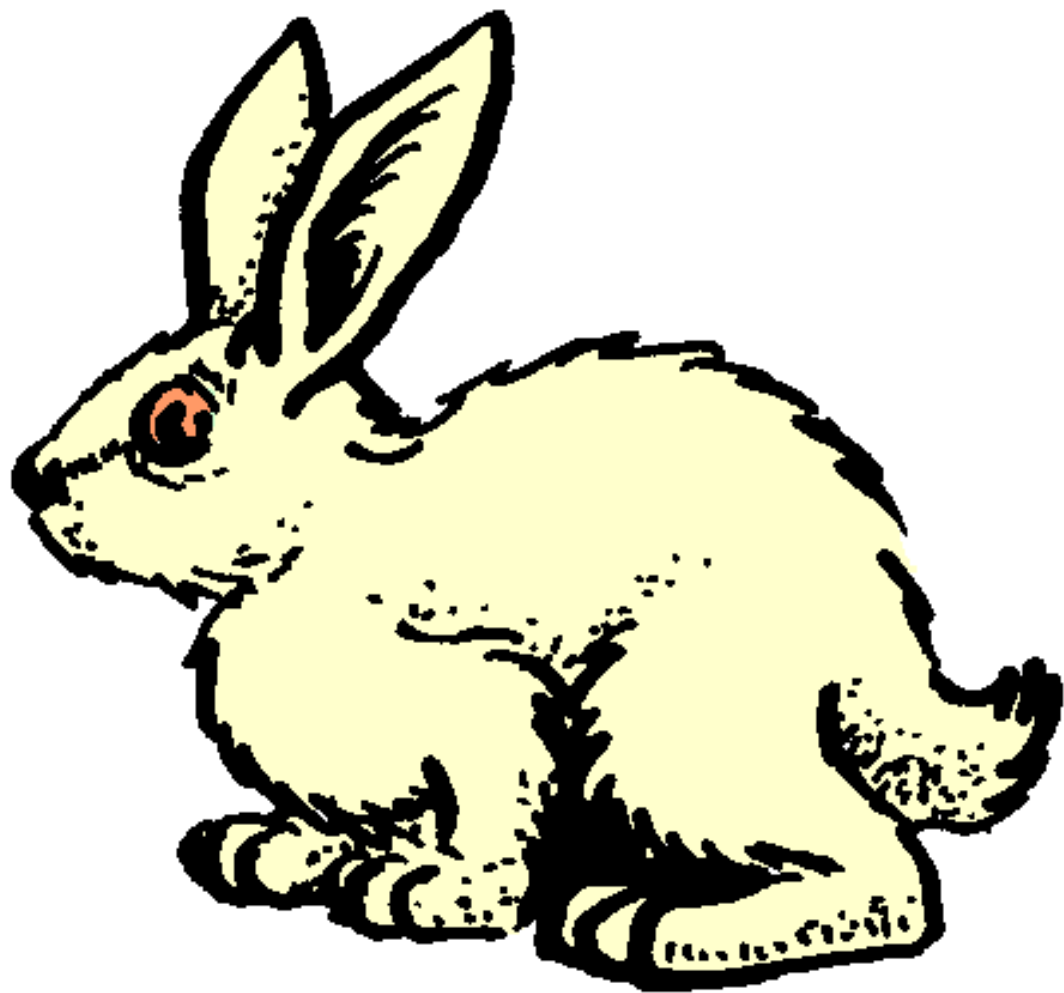


in

In

in

In



lapin

lapin



An

an

an

An



gant

gant

INFORMATIONS SUR LE PROJET

Origine des images :

Les dessins illustrant les gestes Borel Maissonny sont la création de durand.christo@wanadoo.fr et sont disponibles sur <http://lecartablededudule.pagesperso-orange.f>.

Les photos des gestes on été trouvées sur différents sites et proviennent à l'origine du livre Bien Lire et aimer lire de Clothilde Sylvestre de Sacy.

Les images illustrant les mots proviennent :

- des images fournies avec le logiciel Fiche Express (Accès Éditions) pour la grande majorité ;
- de la banque d'images du site La petite souris <http://lps13.free.fr/> ;
- la hulotte provient du site internet La Hulotte, journal documentaire <http://lahulotte.fr/> ;
- de la banque d'image Open Clipart.

police de caractères	
Cursive standard	exemple de caractères T16
GinoSchoolScript	exemple de caractères T16
Script cole	exemple de caractères T16

