

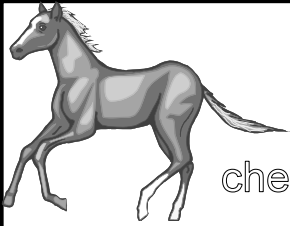


Lecture: le son [e]

CP

	 [e]
e	 cheval
e	
É	
E	



1. Dictée phonétique.

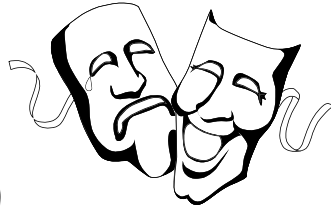
.....

appréciation :

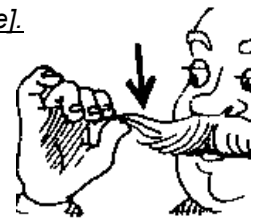
2. Dans les mots suivants, on entend toujours [e]. Mets une x à l'endroit où tu entends [e].



la _ _ _



le _ _ _



la _ _ _



la _ _ _



des _ _ _



la _ _ _

3. Entoure la lettre "e" chaque fois que tu la vois : e e É E

e	é	e	a	e	è	e	é	e	a	a	e	e	é	e	a
E	É	M	E	F	E	A	É	E	W	E	É	E	F	É	E
e	é	e	a	e	ø	e	e	ø	e	e	é	e	ø	e	e

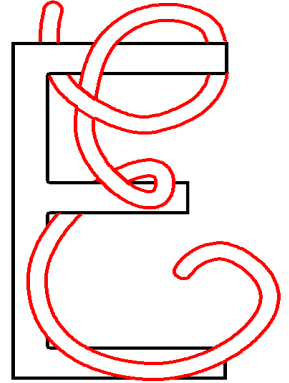
4. Colorie la syllabe de la couleur demandée

5. Écris les syllabes dictées par la maîtresse.

6. Je relie l'article qui convient à l'image

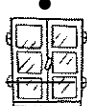
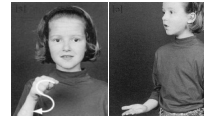
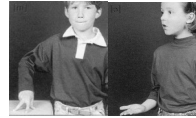
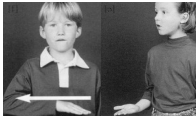
le .

la .

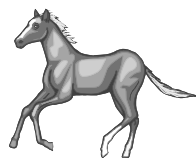
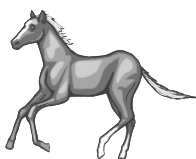


7. Complète avec la syllabe qui manque et relie aux gestes des sons

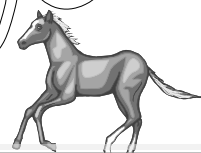
fe che me se

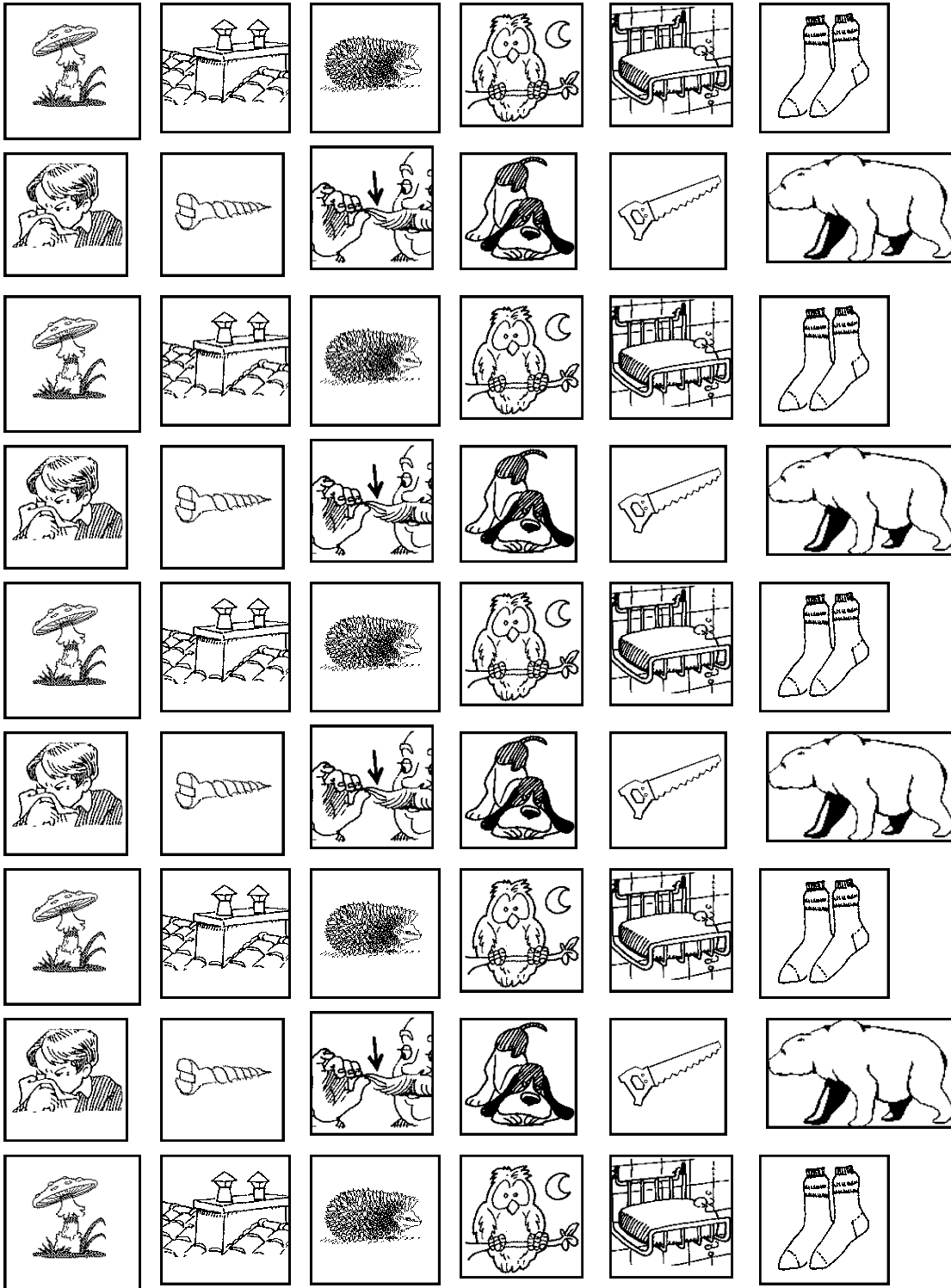


la — mise la — nêtre le — cond la — minée le — lon



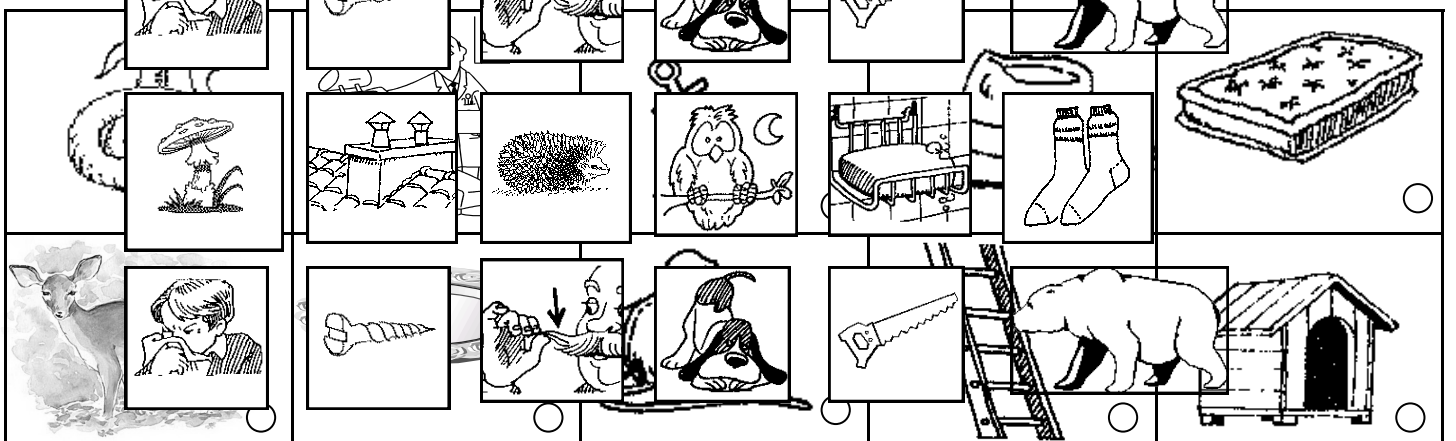
e e e e e e e e e e e e





2. Colorie

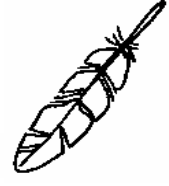
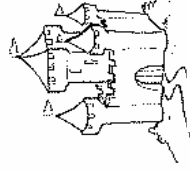
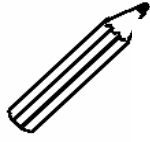
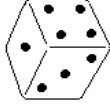
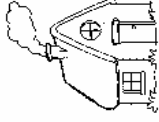
les pastilles si tu en-



Ecris "le" ou "la".

la

le



Ecris "le" ou "la".

la

le

