

Je m'entraîne seul(e).

Fiche no 9 (b)

Si nécessaire, je m'entraîne encore.



6

$$36 = 40 - \dots$$

$$36 = 20 + \dots + 6$$

$$36 = 12 + \dots + 12$$

$$36 - \dots = 20$$

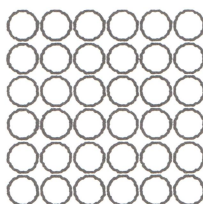
$$36 = 25 + \dots$$

$$\dots + 6 + 10 = 36$$

$$36 = \dots + 11$$

$$36 - 21 = \dots$$

$$14 + \dots = 36$$

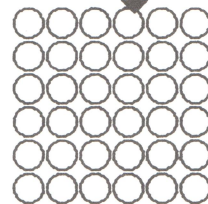


$$16 + \dots = 36$$

$$36 - 22 = \dots$$

$$36 - 15 = \dots$$

$$\dots + 12 = 36$$



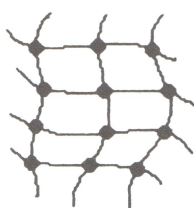
$$\dots - 16 = 20$$

$$23 + \dots = 36$$

$$36 - \dots = 11$$

$$36 = 23 + \dots$$

7



$$3 + 3 + 3 + 3 = \dots$$

$$4 + 4 + 4 = \dots$$

$$3 \times 4 = \dots$$

$$4 \times 3 = \dots$$

$$\dots \times 12 = 12$$

$$4 \times \dots = 12$$

$$\dots \times 2 = 12$$



$$3 \times 4 = \dots$$

$$4 \times \dots = 12$$

$$12 = \dots \times 6$$

$$12 - \dots = 6$$

$$12 - 4 = \dots$$

$$12 - \dots = 9$$

8

| | +7 | +8 | -6 |
|-----|-------|-------|-------|
| 5 | | | |
| 15 | | | |
| 8 | | | |
| 18 | | | |
| 28 | | | |
| 16 | | | |
| 116 | | | |

$$9 + 4 = \dots$$

$$13 - 4 = \dots$$

$$53 - 4 = \dots$$

$$173 - 4 = \dots$$

$$7 + 8 = \dots$$

$$15 - 8 = \dots$$

$$65 - 8 = \dots$$

$$185 - 8 = \dots$$

$$6 + 9 = \dots$$

$$15 - 9 = \dots$$

$$45 - 9 = \dots$$

$$345 - 9 = \dots$$

$$6 + 8 = \dots$$

$$14 - 6 = \dots$$

$$64 - 6 = \dots$$

$$234 - 6 = \dots$$

9

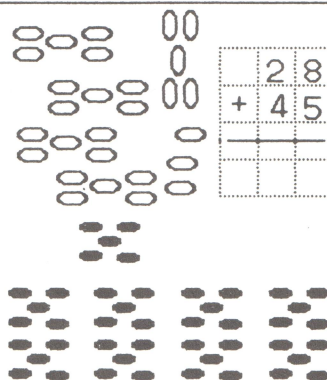
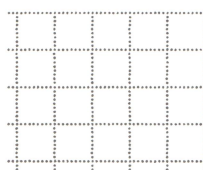
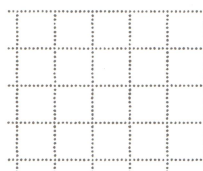
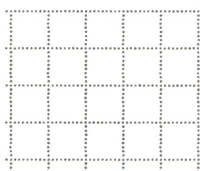
Place et effectue :

$$145 + 48 =$$

$$236 + 57 =$$

$$108 + 78 =$$

$$429 + 126 =$$



10

Yvan, Claire et Diana sont en vacances. Ils écrivent chacun 3 lettres. C'est moi qui mets les lettres dans les enveloppes.

Combien d'enveloppes me faut-il ?
Il me faut enveloppes.

Calcul:

Pour un jeu, chaque joueur reçoit 4 bouchons. Il y a 3 joueurs. Combien faut-il de bouchons ?

Il faut bouchons.

Calcul: