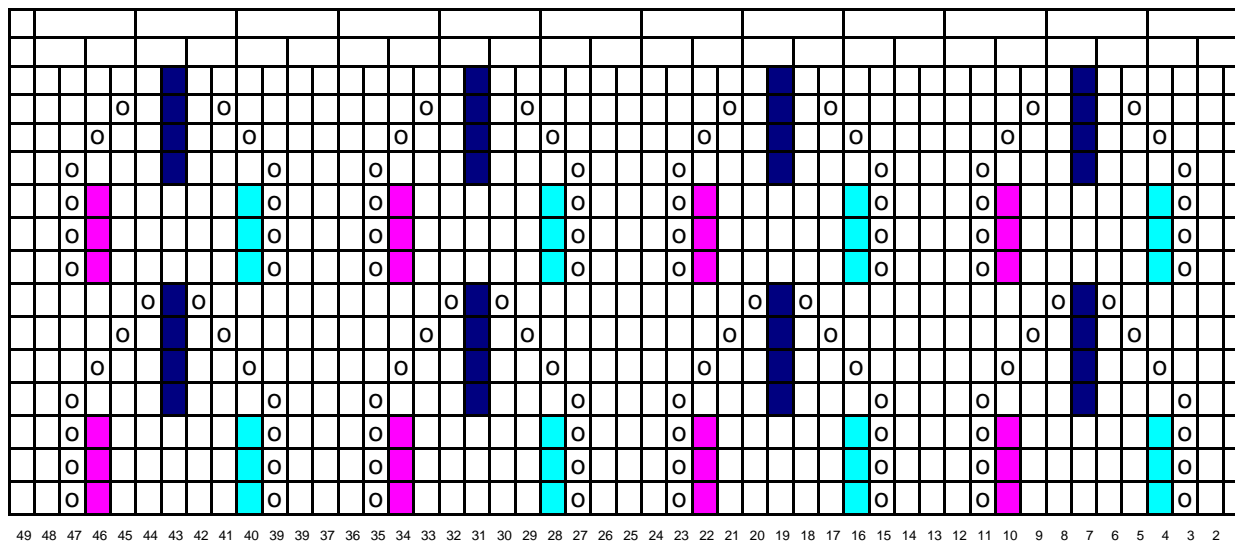


83  
81  
79  
77  
75  
73  
71  
69  
67  
65  
63  
61  
59  
57  
55  
53  
51  
49  
47  
45  
43  
41  
39  
37  
35  
33  
31  
29  
27  
25  
23  
21  
19  
17  
15  
13  
11  
9  
7  
5  
3  
1

- end
- jeté
- 1 surjet double
- 2 ens
- surjet simple

<http://lamalleotresordesylvie,over-blog.com>

# BONNET



31 mailles 2/2 finir 1 maille  
 29 mailles 2/2 finir 1 maille

<http://lamalleotresordesylvie,over-blog.com>