

[ʃ]



ch

Ch

ch

Ch



chocolat



[g]



g

Gu

g

Gu

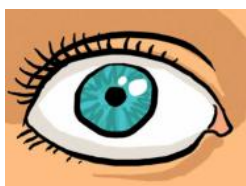


un gâteau

rigolo



[o]



au

eau

au

eau



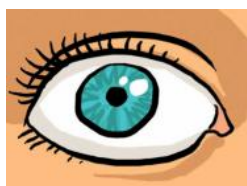
crapaud

château





[ɛ]



ei

ai

ei

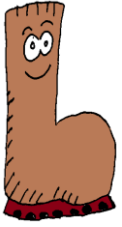
ai



fraise

reine





[b]



b

B

ℓ

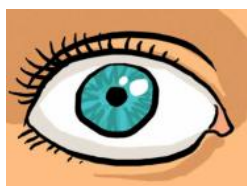
℔



crabe



[ɛ]



e-

e--



terre



[z]



s

z

z

z



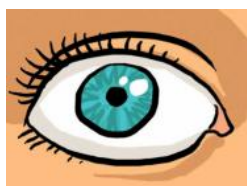
fusée

treize

13



[ø]



eu

oeu

eu

œu



œuf

feu

