

# A T E L L I E R

# S Y L L A B E S

18 cartes vertes où il faut trouver la syllabe du début de l'image.

18 cartes orange où il faut trouver la/les syllabe(s) qui se trouvent à l'intérieur du mot.

L'élève pose un jeton sur la/les bonne(s) case(s).

Les images proviennent du site Art4apps.





ca

co

chi

vé

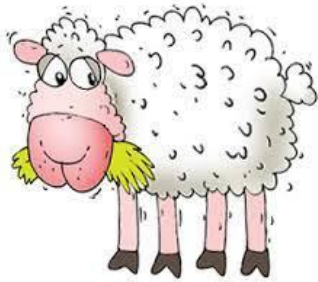
vu

va

chi

ché

cha



mou

nou

rou

clo

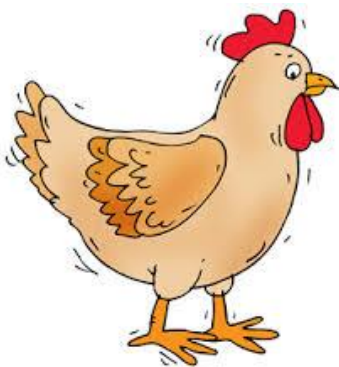
cro

cho

chu

chou

che



lou

bou

pou

fli

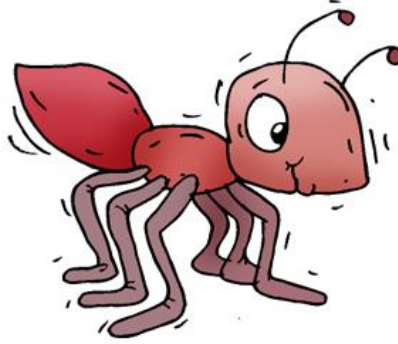
fla

flé

sou

kou

zou



ta

fa

la

vou

fou

gou

oi

on

ou



cri

chi

cli

cre

dre

gre

li

ti

pi



fi

bi

ti

cha

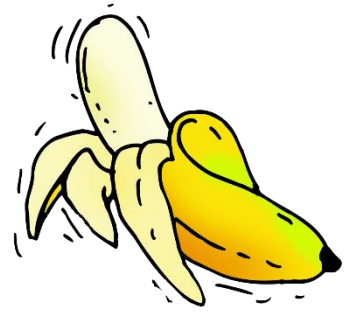
cho

ché

tra

pra

cra



bou

dou

pou

fu

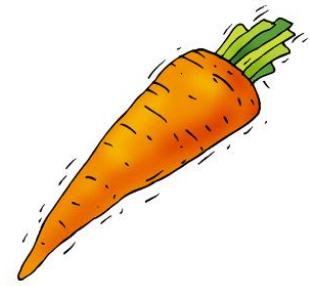
tu

mu

ma

da

na



toi

doi

foi

co

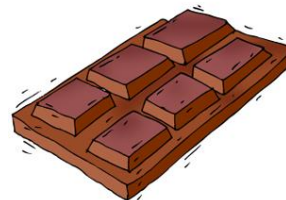
tro

li

ro

do

so



bi

di

pi

na

co

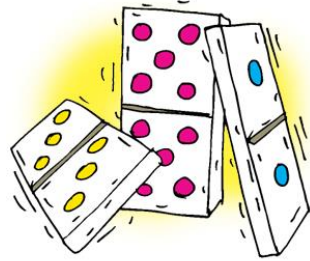
la

tron

gron

fron





grou

trou

crou

bo

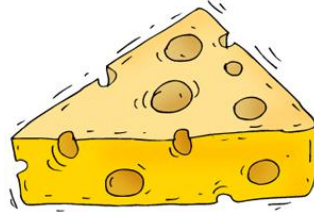
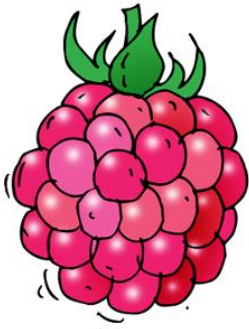
mi

no

gon

bon

zon



doi

poi

boi

ga

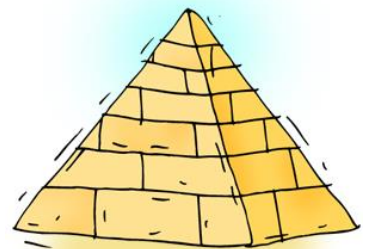
na

ma

pa

ta

ra



gir

fir

mir

sou

gou

mou

ra

gi

mid