

10 principales maladies

Ronds de sorcières

Fil rouge

Rouille

Dollar spot

Helminthosporiose

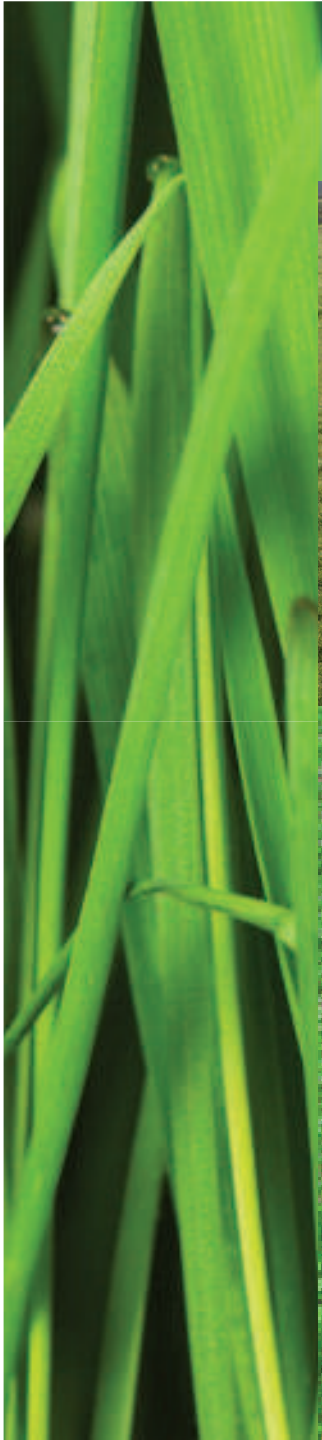
Fusariose froide

Ophiobolus

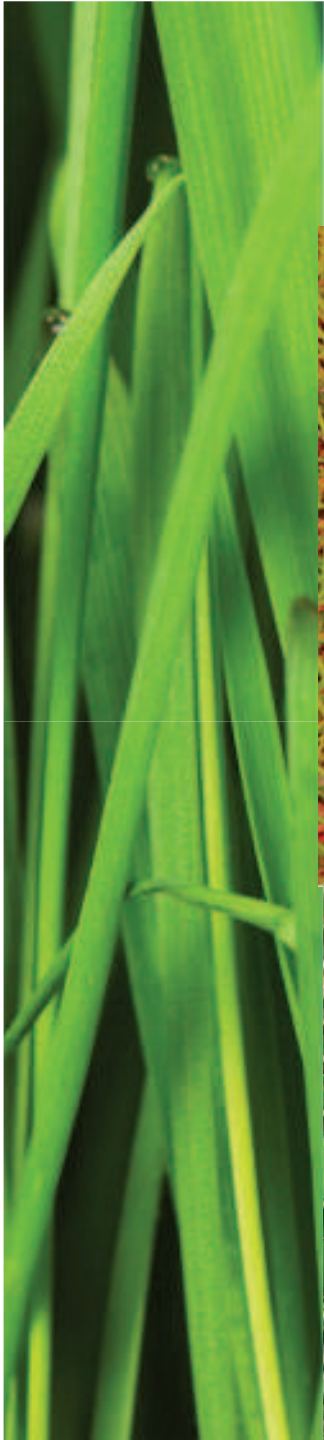
Maladies physiologiques

- Carences (voir cours de monsieur Colla)
- Soif (voir arrosage)
- pH inadapté (voir cours de monsieur Colla)

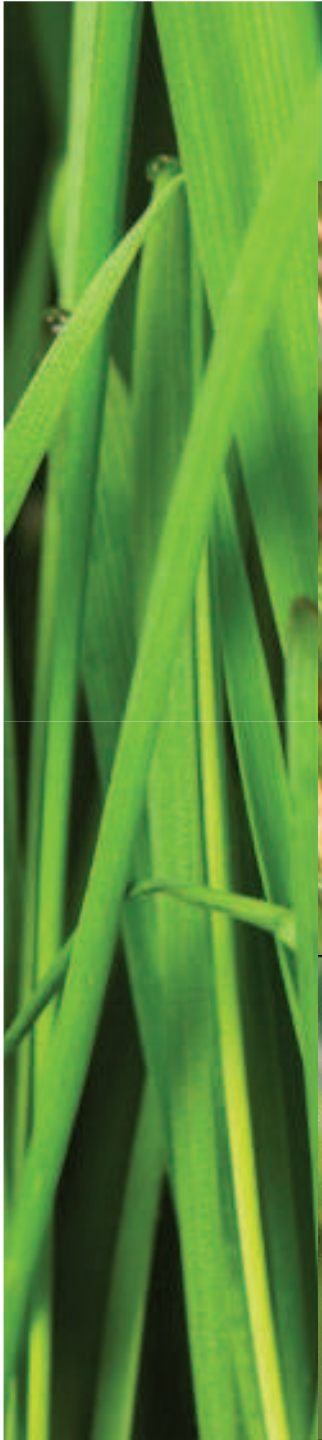
Ronds de sorcières



Fil rouge



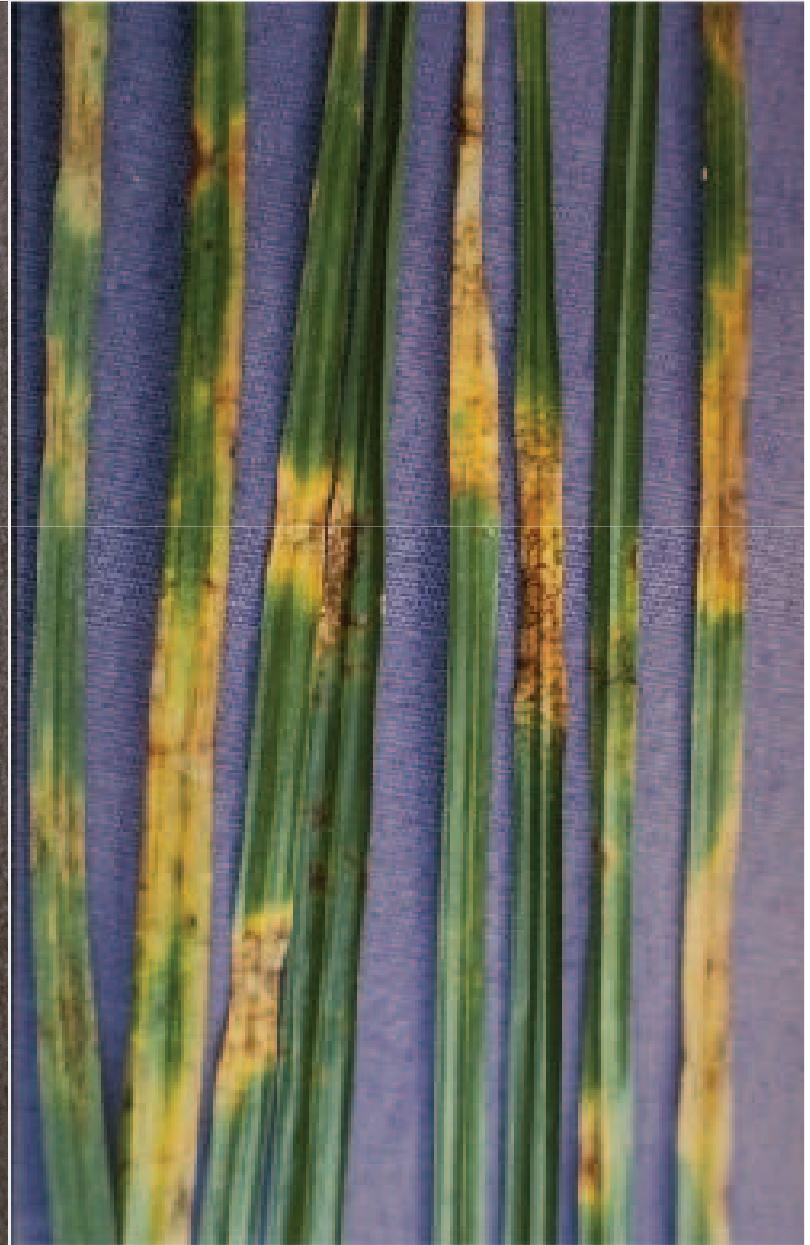
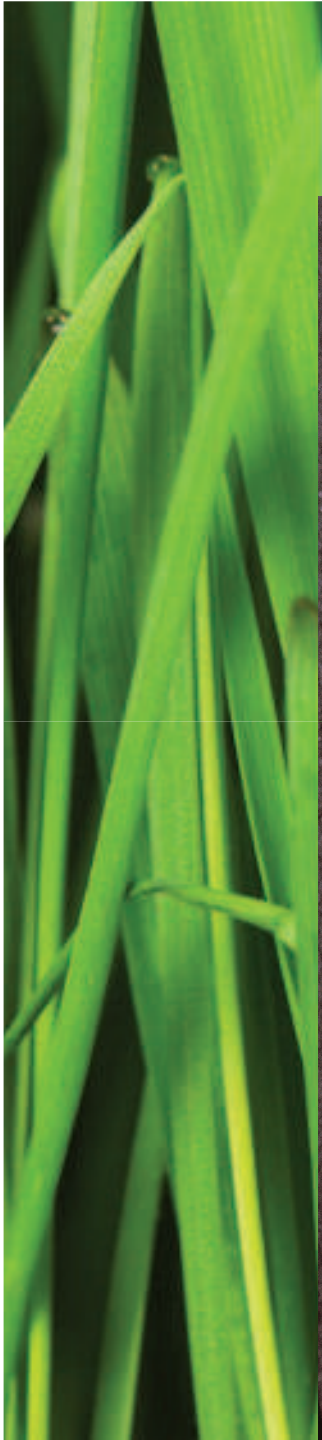
Rouille



Dollar spot



Helminthosporiose



Fusariose froide



Ophiobolus

