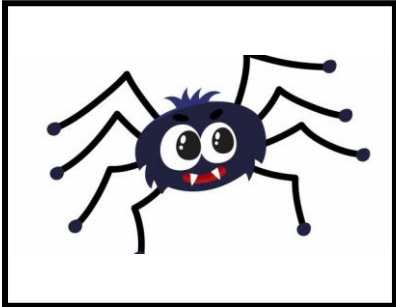


pei

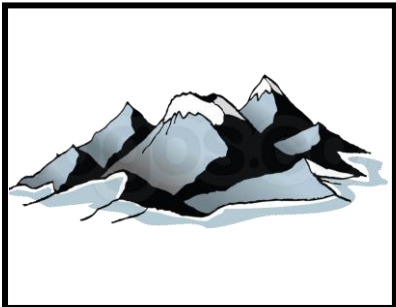
gne



a

rai

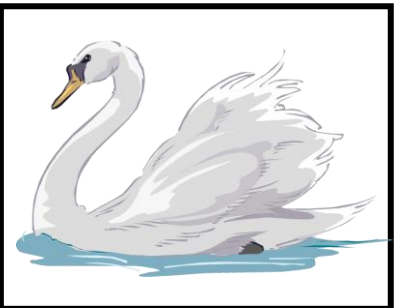
gnée



mon

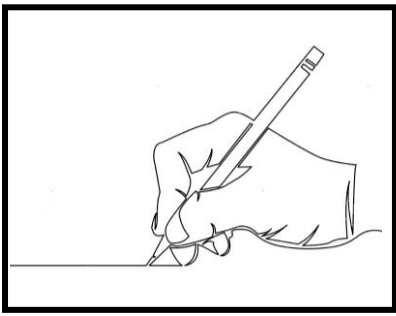
ta

gne



cy

gne



li

gne



châ

tai

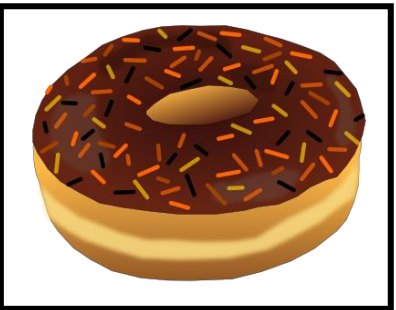
gnes



cham

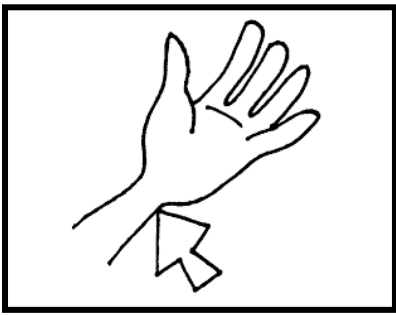
pi

gnon



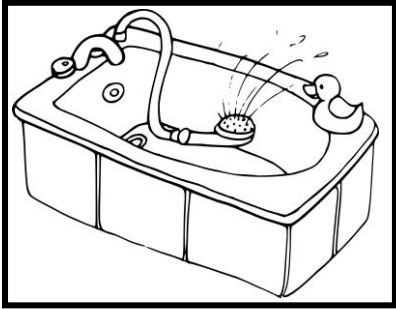
bei

gnet



poi

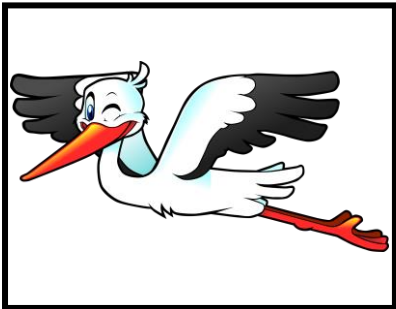
gnet



bai

gnoi

re



ci

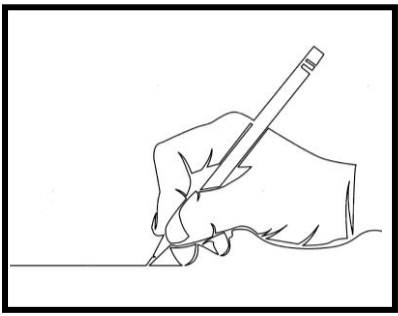
go

gne



a

gneau



li

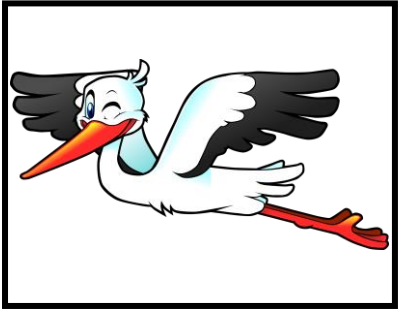
gne



châ

tai

gnes



ci

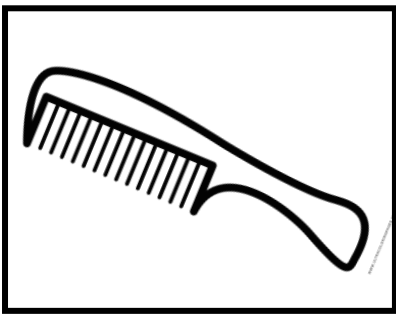
go

gne



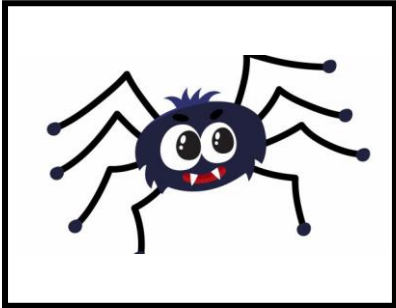
a

gneau



pei

gne



a

rai

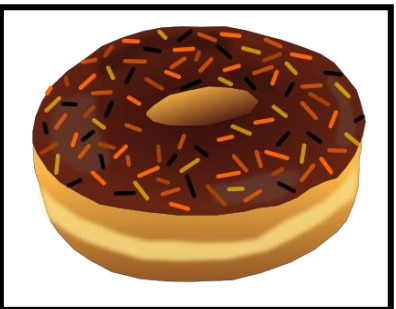
gnée



cham

pi

gnon



bei

gnet