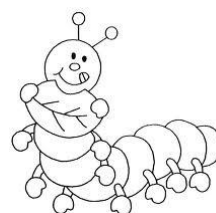
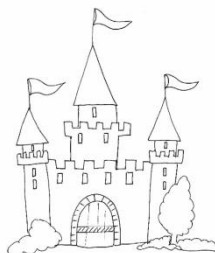
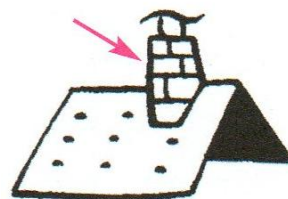
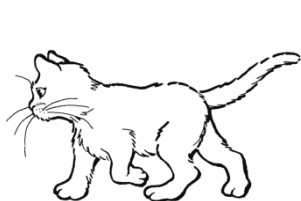


Prénom : .....

Date : .....

<b>LECTURE</b>	<b>Le son [ʃ]</b>
----------------	-------------------

**1/ Repère la place du son [ʃ] et coche la bonne case :**



**2/ Dans chaque liste, barre le mot qui ne contient pas les lettres ch :**

riche

louche

niche

oncle

souche

franche

gauche

dimanche

faucher

bouche

chut

chose

hérisson

chien

chaud

échauder

cacahuète

pochette

douchette

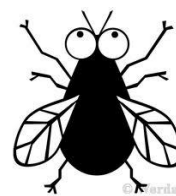
gâcher

**3/ Reconstitue chaque mot en t'aidant des syllabes :**

pe	char	é
pe	char	é

mi	che	née
mi	che	née

che	mou
che	mou



une

la

la