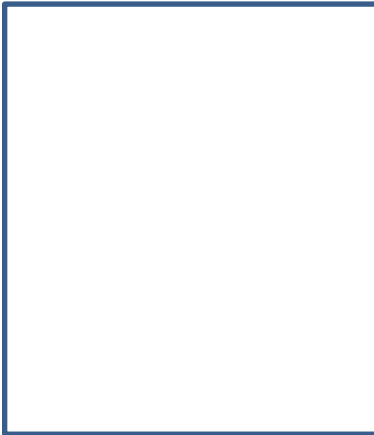
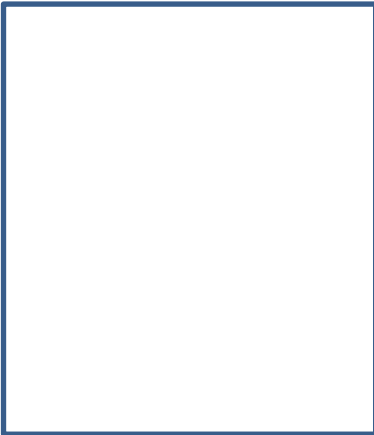
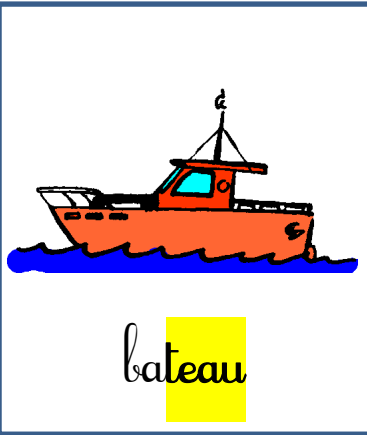
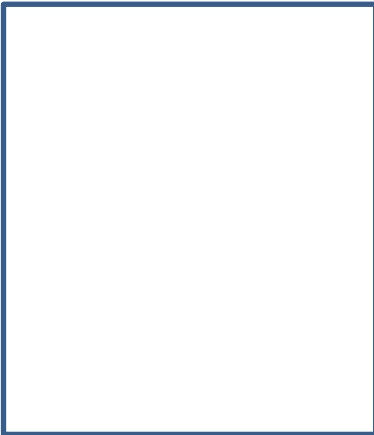
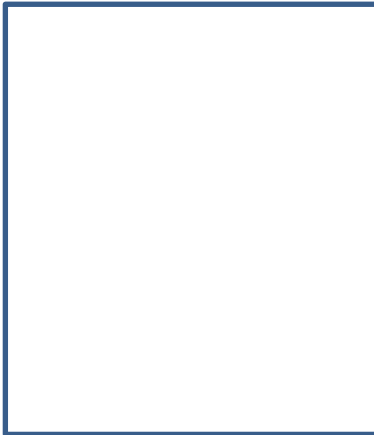


Je finis comme...



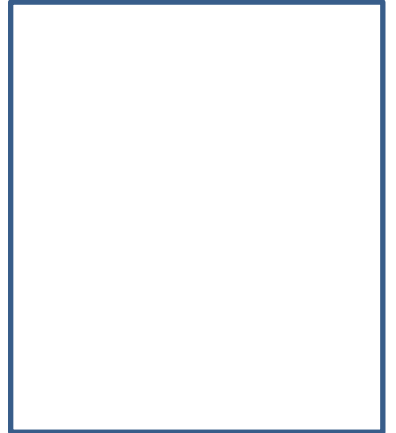
Je finis comme...



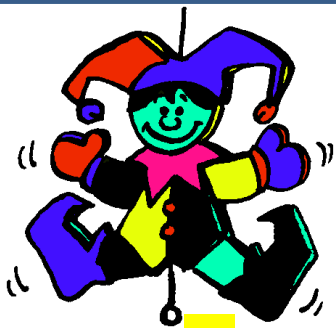
Je finis comme...



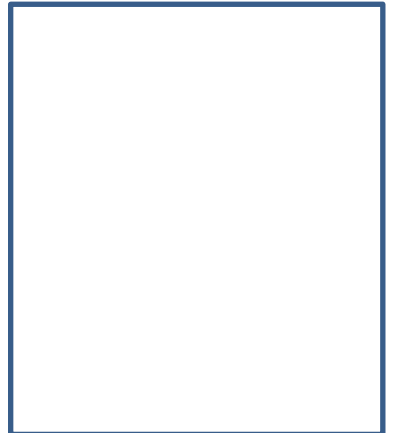
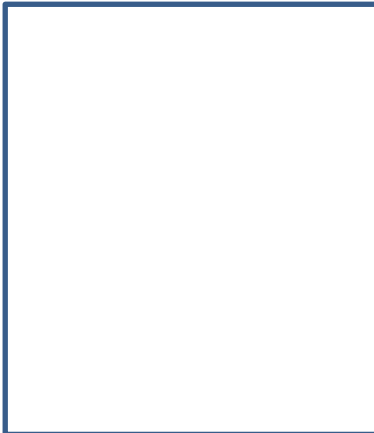
pouce



Je finis comme...

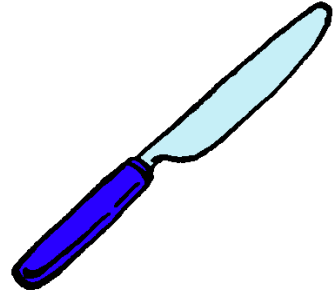


pantin

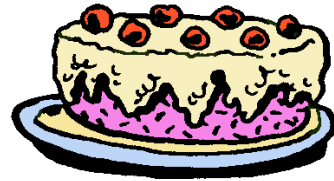




château



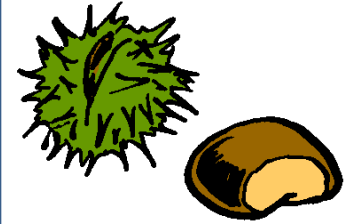
couteau



gâteau



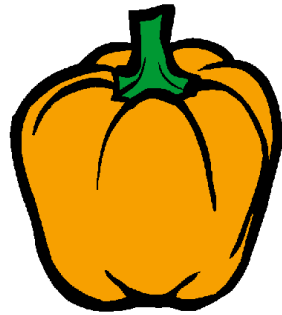
manteau



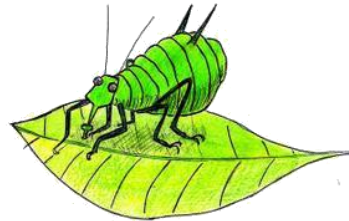
marron



potiron



poivron



puceron



ambulance



brosse



patin



bouquetin



serpentin



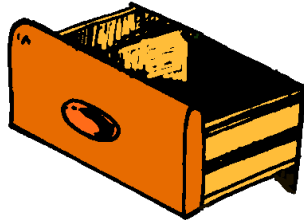
thym



miroir



mouchoir



tiroir



désespoir



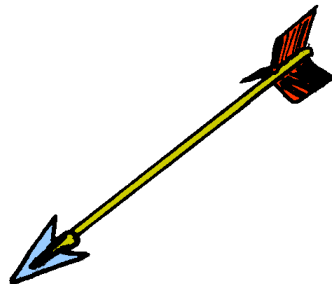
biche



branche



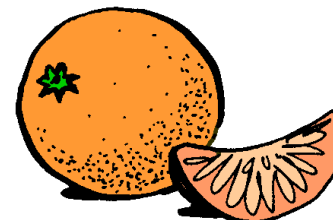
douche



flèche



cage

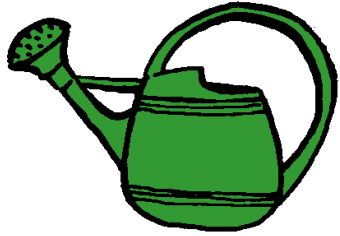


orange



neige

Je finis comme...



arrosoir

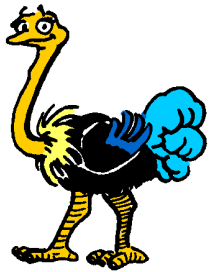
| |
|--|
| |
|--|

| |
|--|
| |
|--|

| |
|--|
| |
|--|

| |
|--|
| |
|--|

Je finis comme...



autruche

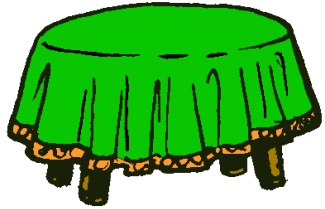
| |
|--|
| |
|--|

| |
|--|
| |
|--|

| |
|--|
| |
|--|

| |
|--|
| |
|--|

Je finis comme...



nappe

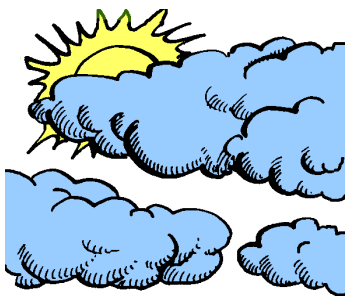
| |
|--|
| |
|--|

| |
|--|
| |
|--|

| |
|--|
| |
|--|

| |
|--|
| |
|--|

Je finis comme...



nuage

| |
|--|
| |
|--|

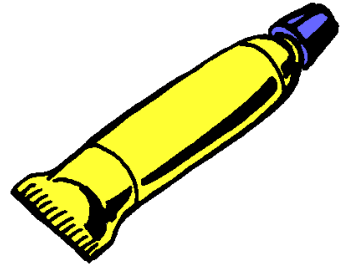
| |
|--|
| |
|--|

| |
|--|
| |
|--|

| |
|--|
| |
|--|



manège



tube



soupe



loupe



lampe



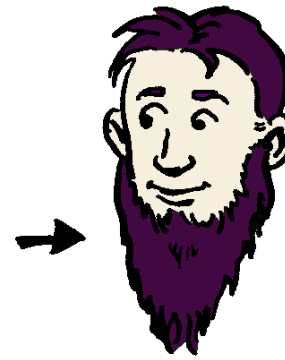
globe



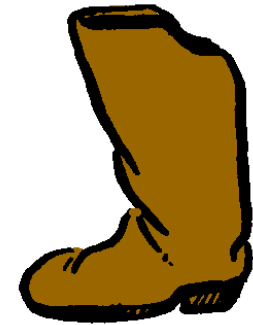
robe



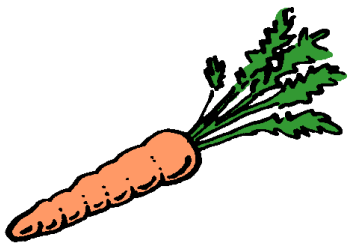
pipe



barbe



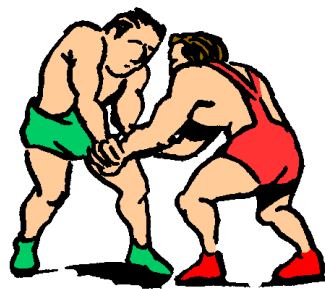
botte



carotte



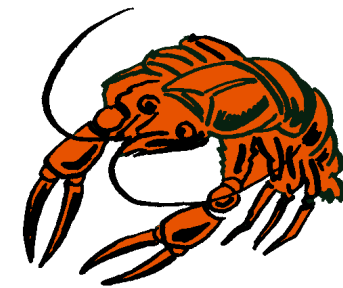
flute



lutte

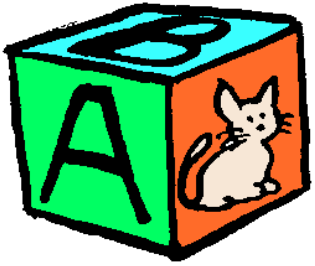


tasse



écrevisse

Je finis comme...



cube

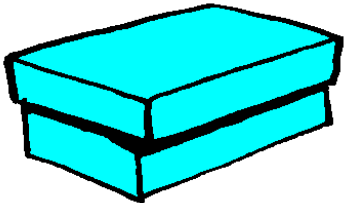
| |
|--|
| |
|--|

| |
|--|
| |
|--|

| |
|--|
| |
|--|

| |
|--|
| |
|--|

Je finis comme...



boite

| |
|--|
| |
|--|

| |
|--|
| |
|--|

| |
|--|
| |
|--|

| |
|--|
| |
|--|