



1

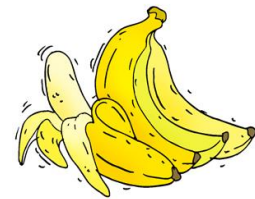
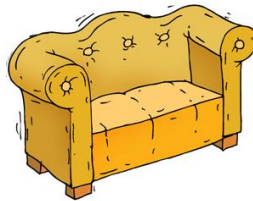
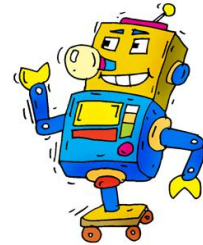
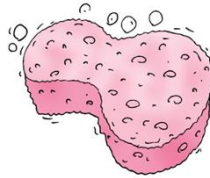
2

3

Le son [b] et [p]

Entoure en VERT les images si tu entends le son [b].

Entoure en JAUNE les images si tu entends le son [p].



Dessine autant de carrés qu'il y a de syllabes dans chaque mot. Puis, colorie en vert la case qui contient le son [b] et en jaune la case qui contient le son [p].



Le son [b] et [p]

Lis les mots puis relie.



- bus
- dus



- cobra
- codra



- pinceau
- binceau



- pompier
- bompier

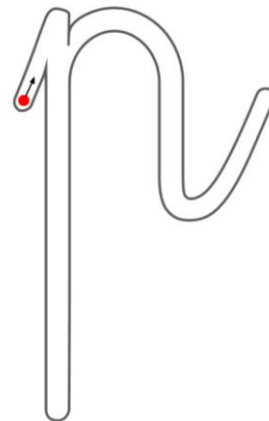
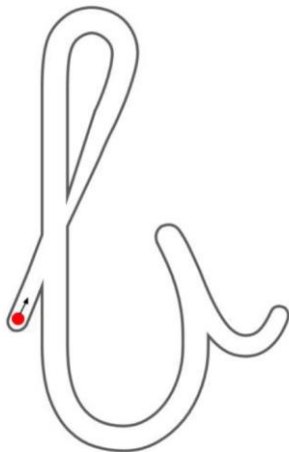


- tadis
- tapis



- pateau
- bateau

Repasse plusieurs fois dans chaque lettre.



Le son [b] et [p]

Travail facultatif

Complète la grille. Aide-toi des mots de la liste.

poule

tapis

ballon

bus

pipe

A crossword puzzle grid with the following structure:
- Row 1: 4 empty cells, preceded by a pipe icon.
- Row 2: 1 empty cell, preceded by a chicken icon.
- Row 3: 2 empty cells, preceded by a bus icon.
- Row 4: 6 empty cells, preceded by a soccer ball icon.
- Row 5: 1 empty cell, preceded by a superhero icon.
The grid is composed of white squares with black borders, and the icons are placed to the left of their respective starting cells.

Écris le mot à côté de chaque dessin. Aide-toi des syllabes.

bou pou gie por plu pée te me



.....



.....



.....



.....