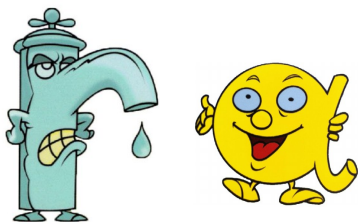


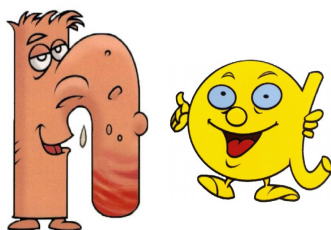


F'ai ... Qui a ? Les syllabes simples

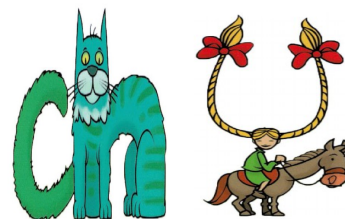
F'ai



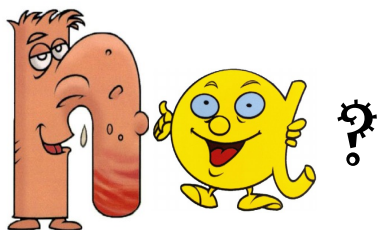
F'ai



F'ai



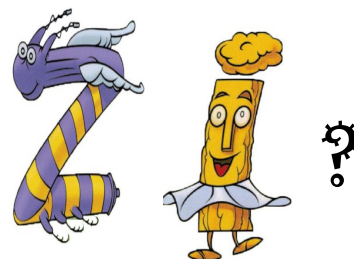
Qui a



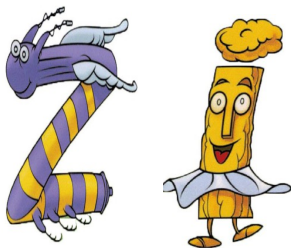
Qui a



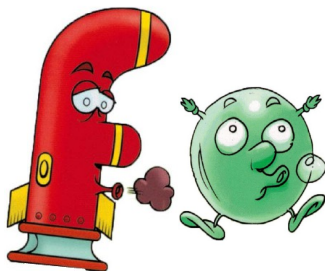
Qui a



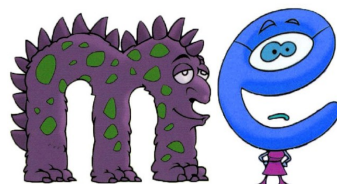
F'ai



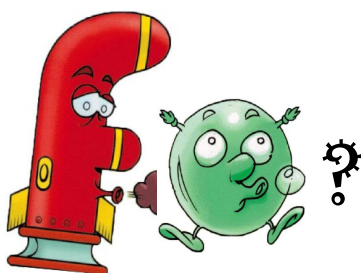
F'ai



F'ai



Qui a



Qui a



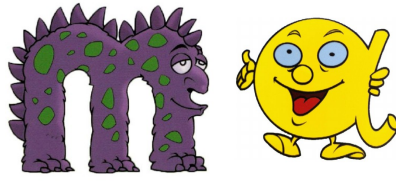
Qui a



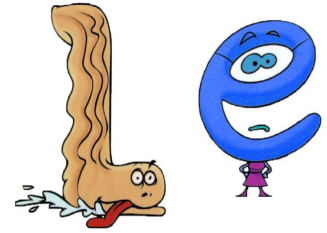
F'ai



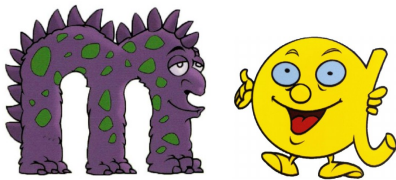
F'ai



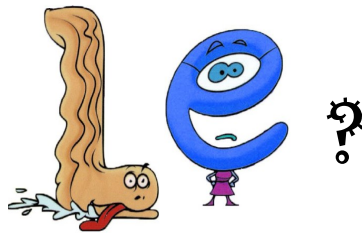
F'ai



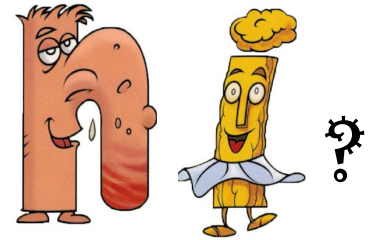
Qui a



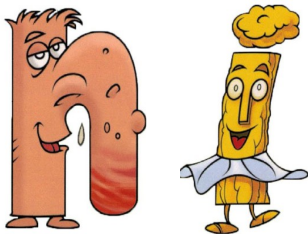
Qui a



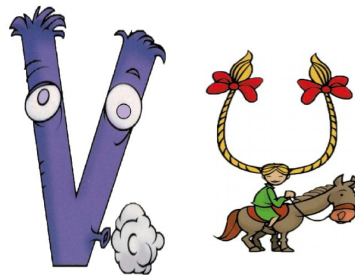
Qui a



F'ai



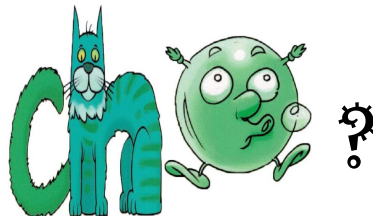
F'ai



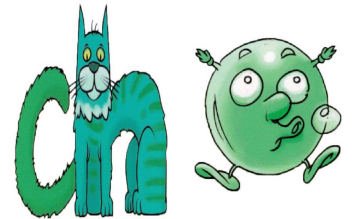
Qui a



Qui a



F'ai



Qui a

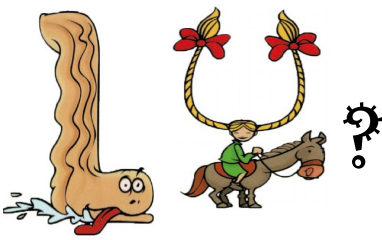


Petit atelier où l'on distribue les cartes aux élèves. Ils « sont » la première syllabe et annonce la deuxième pour rechercher la carte suivante.

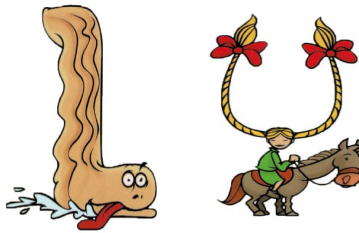
F'ai



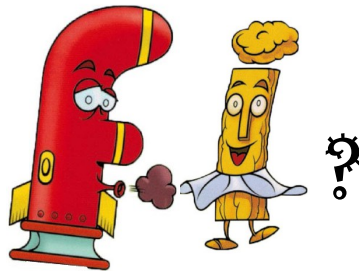
Qui a



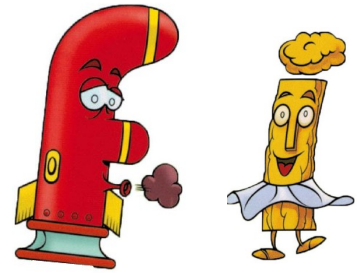
F'ai



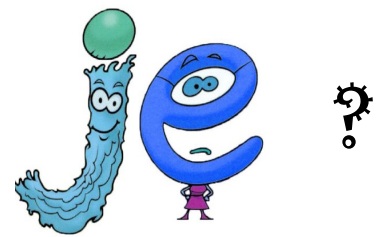
Qui a



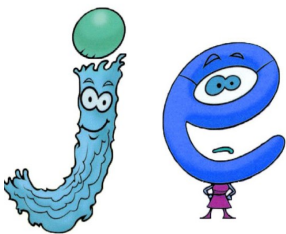
F'ai



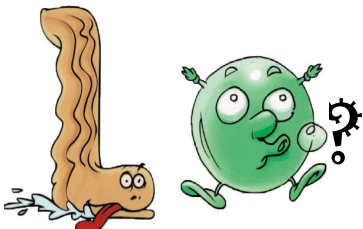
Qui a



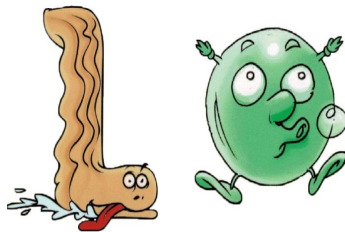
F'ai



Qui a



F'ai



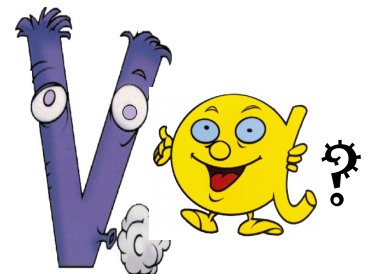
Qui a



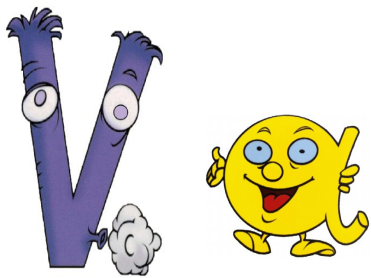
F'ai



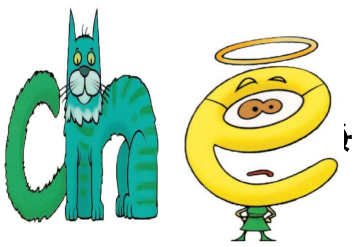
Qui a



F'ai



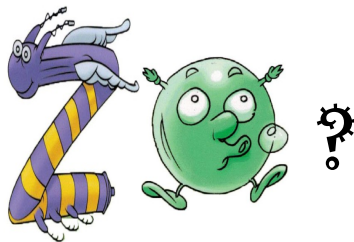
Qui a



F'ai



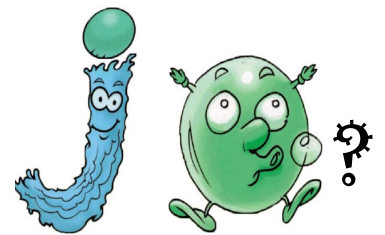
Qui a



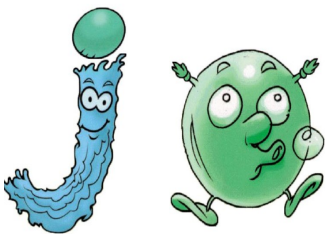
F'ai



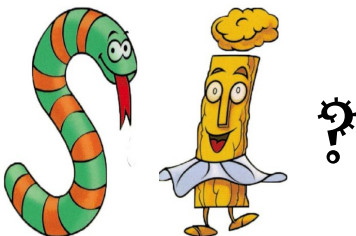
Qui a



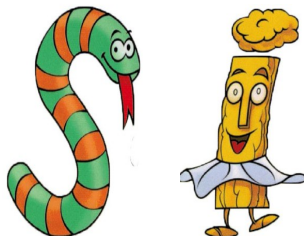
F'ai



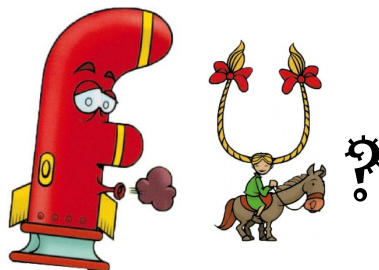
Qui a



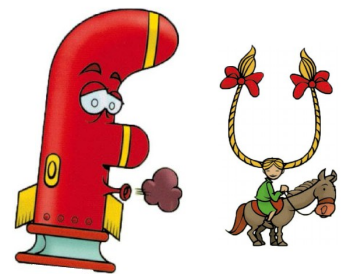
F'ai



Qui a



F'ai



Qui a

